

2025
01月

**EACH RAY IS
BRIGHTER
IN SHINLAND**

西朗德·让光更美

Optics
Shinland

EACH RAY IS BRIGHTER IN SHINLAND
www.shinland.com.cn

西朗德
专注光学领域29年

SPECIALIZATION IN
OPTICS

29
years

SHINLAND INTRODUCTION

EACH RAY IS BRIGHTER IN SHINLAND

西朗德
不断超越，继续领跑

西朗德光学拥有近30年的照明光学经验，于2013年正式在深圳设立总部，成立深圳市西朗德光学有限公司，自成立以来，我们专注于光学解决方案，秉承着“让光更美”的企业使命，公司通过技术和产品的不断创新，持续为客户提供更好更具竞争力的光学解决方案。目前，西朗德光学服务领域已涵盖商业照明、家居照明、户外照明、汽车照明、舞台照明、特种照明等。

西朗德总部位于深圳市南山区，工厂位于东莞塘厦，属于国家高新技术企业、专精特新企业，深圳总部设立研发中心、营销中心，业务辐射海内外，先后在中山、佛山、厦门、华东设立销售办事处，东莞工厂设立模具车间、注塑车间、喷涂车间、镀膜车间、装配车间、检测实验室等，能为客户提供放心保障的产品品质。

Keep Exceeding, Continue to Lead

Shinland Optical is a company with 20+ years experience in lighting optics. In 2013 our headquarter was setup in Shenzhen China. After then we focus our effort in providing lighting optics solution to our customer with advance and innovative technologies. Now, our service include business lighting, home lighting, outdoor lighting, automotive lighting, stage lighting and special lighting etc. "Make Light to be More Beautiful" is our company mission.

Shinland Optical is a national high tech enterprise and specialized & sophisticated enterprises, Our headquarter is located in Nanshan, Shenzhen, and our manufacturing facility is located in Tongxia, Dongguan. In our Shenzhen headquarter, we have our R&D centre and Sales/ Marketing Centre, Sales Offices are located in Zhongshan, Foshan, Xiamen and Shanghai. Our Dongguan manufacturing facility has plastic molding, overspraying, vacuum plating, assembling workshop and test lab etc to produce quality product to our customers.

www.shinland.com.cn

EACH RAY IS BRIGHTER IN SHINLAND

29years
Specialization In Optics

精密模具加工

Precision Mold Processing

纳米电镀喷涂

Nano Electroplating Spray

光学注塑成型

Optical Injection Molding

产品验证实验室

Product Verification Laboratory

光学设计

Optical Design

完整照明解决方案

Complete Lighting Solution

光学应用培训

Optical Application Training

光学资讯平台

Optical Information Platform

SHINLAND
SERVICE
西朗德服务



Vertical Integrated Production

垂直一体化生产

High-Speed Precision Machining Center

高速精密加工中心

德国高端五轴加工机床设备
模具加工精度 +/- 2μm
蔡司三坐标检测
模具CNC直接加工高光镜面

Germany Exeron 5-Axis
Machine, Excellent Precision of +/- 2μm,
ZEISS Three-Dimensional Inspection
CNC Processes High-Gloss Mirror
Surface Directly.

Automated Injection Molding Production Line

全自动化注塑生产线

百万级无尘生产车间
高精度注塑机
全自动化注塑生产线
独立供料系统及无油空压系统

Class 10,000 Dust-Free Production Workshop
High Precision Injection Molding Machine
Automated Injection Molding Production Line
Independent Material Feeding System and
Oil-Free Compressed Air System

Class 10,000 clean room environment

自动化万级无尘电镀车间

进口全自动电镀设备
万级电镀车间
超薄电镀工艺
有底漆/无底漆光学镀膜

Imported Automatic Plating Equipment
Class 10,000 Plating Workshop
Ultra-thin Plating Process
Optical Coating with Primer / Optical
Coating without Primer.

Reliability testing

信赖性测试

百格测试	冷热冲击测试
盐雾测试	老化测试
泡碱测试	集成分布光度计测试
高温高湿测试	
Cross Hatch Test	Thermal Shock Test
Salt Spary Aging Test	Aging Test
Alkaline Test	Photometric Testing
High Temperature & Himidity Test	of Integrated Distribution



INDEX

- I** SL 反光杯系列
SL Reflector
- I Pro 反光杯系列
I Pro Reflector
- II** SL-A 反光杯加凸透镜系列
SL-A Reflector with Dome
- SL-B 电镀透镜系列
SL-B ODR Lens
- SL-D 全反射透镜系列
SL-D TIR Lens
- SL-PL-JG 极光透镜系列
JG Lens Series
- III** SL-RF-AD 黑光反光杯加凸透镜系列
SL-RF-AD Dark Light Reflector with Dome
- SL-RF-AG 黑光反光杯
SL-RF-AG Dark Light Reflector
- IV** SL-RF-AF 防眩罩系列
SL-RF-AF Anti-glare Trim
- V** SL-E 条形灯反光杯系列
SL-E Profile Linear
- SL-RF-AE 一体化线形反光杯系列
SL-RF-AE Profile linear II
- SL-RF-AQ 磁吸条形灯系列
SL-RF-AQ Magnetic Linear Reflector

- VI** SL-PL-AM 黑洞透镜系列 I
SL-PL-AM Front Focal Lens
- SL-PL-AM 黑洞透镜系列 II
SL-PL-AM Front Focal Lens II
- VII** SL-RF-AO 无缝接轨反光杯系列
SL-RF-AO Exchangeable Design(Reflector)
- SL-PL-AO 无缝接轨透镜系列
SL-PL-AO Exchangeable Design(Lens)
- IX** SL-PL-AG 全反射透镜系列
SL-PL-AG TIR Lens
- SL-PL-DG 刀光透镜系列
SL-PL-DG Lens
- SL-PL-JY 剑影透镜系列
SL-PL-JY Lens
- X** SL-RF-AP 幕光洗墙系列
SL-RF-AP WALLWASHER

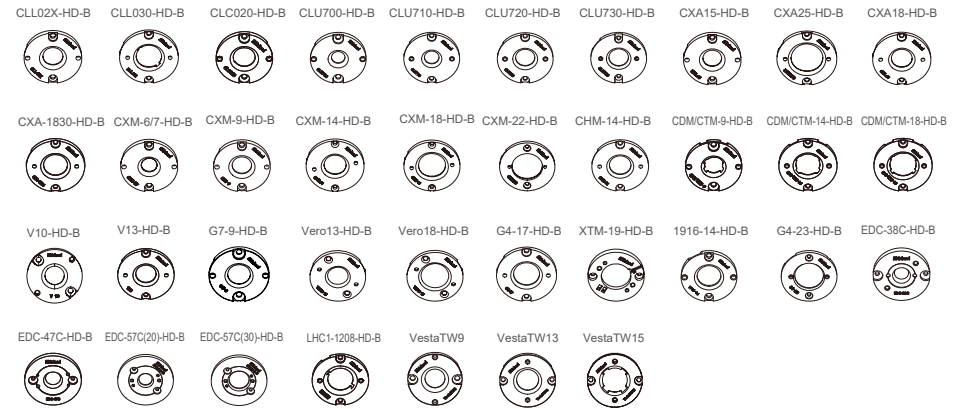
- SL-PL-QJ 全角透镜系列
SL-PL-QJ Lens
- SL-RF-MN 迷你反光杯系列
SL-RF-MN Reflector

- SL-RF-XG 消光反光杯系列
SL-RF-XG Reflector

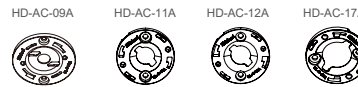
SHINLAND'S SERIES A HOLDERS 西朗德支架A系列



SHINLAND'S SERIES B HOLDERS 西朗德支架B系列



SHINLAND'S SERIES C HOLDERS 西朗德支架C系列

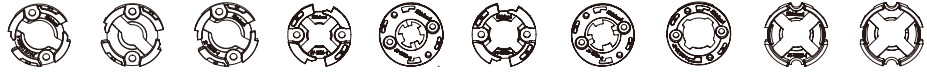


SHINLAND'S SERIES AD HOLDERS 西朗德支架AD系列



SHINLAND'S SERIES JY HOLDERS 西朗德支架JY系列

HD-JY-CLU02X-1 HD-JY-CXA13-1 HD-JY-CXA15-1 HD-JY-NTW6-1 HD-JY-NTW6-2 HD-JY-NTW9-1 HD-JY-NTW9-2 HD-JY-NTW13-1 HD-JY-V4HD-1 HD-JY-CXM-4-1



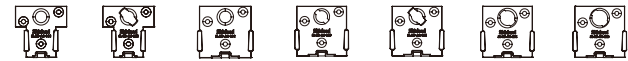
SHINLAND'S SERIES AI HOLDERS 西朗德支架AI系列

HD-AI-18A HD-AI-18B



SHINLAND'S SERIES AG HOLDERS 西朗德支架AG系列

HD-AG-06C HD-AG-06E HD-AG-09C HD-AG-09D HD-AG-09E HD-AG-12C HD-AG-12D



SHINLAND'S SERIES MN HOLDERS 西朗德支架MN系列

HD-MN-CXM-3-1 HD-MN-V3HD-1 HD-MN-CLU7S3-1



SHINLAND'S SERIES XG HOLDERS 西朗德支架XG系列

HD-XG-CXA15-1 HD-XG-CXA15-2 HD-XG-CXA13-1 HD-XG-CLU02X-1 HD-XG-CLU02X-2



COB Holder Use Guide

支架使用指南



I Pro Reflector



IX SL-PL-DG Lens
Φ28 / Φ35 mm



AA
Holders



SL-PL-JY Lens
Φ28 / Φ35mm / Φ45 / Φ50mm



VI SL-PL-AM Lens
Φ20mm



IX SL-PL-QJ Lens
Φ22 / Φ25 / Φ28 / Φ35mm



JY
Holders



AC
Holders



VI SL-PL-AM Lens
Φ42 mm



IX SL-PL-DG Lens
Φ45 / Φ50 mm



IX SL-PL-QJ Lens
Φ40 / Φ45 / Φ50 / Φ55mm



AI
Holders



SL-PL-AI Lens
Φ70 / Φ75mm



II SL-PL-AG TIR Lens
Φ75mm



VII SL-RF-AO Reflector



AD
Holders



SL-RF-AP WALLWASHER
Φ35 / Φ59 / Φ75mm



AG
Holders



VII SL-PL-AO Lens





SL-RF-MN Reflector
Φ14 / Φ18 mm

MN
Holders



SL-RF-XG Reflector
Φ28 / Φ35 /
Φ45 / Φ50mm

XG
Holders

支架使用指南
COB Holder Use Guide

* 灯珠的操作功率与光学器件的使用温度以整灯实测为主。

The power usage of the COB and temperature of the optical components are based on the actual testing of the luminaire.

Matching Holder for COB

光源支架搭配表

BRIDGELUX 普瑞

	LED P/N	A HOLDER	B HOLDER	C HOLDER	D HOLDER	Dimensions	LES
V4 HD	Gen7	SL-V4HD-HD-A	/	/	/	12.5*12.5	4.5
V6 HD	Gen7	SL-blx C6-HD-A SL-HD-AA-09A SL-HD-AA-09B	SL-CLU700-HD-B	SL-HD-AC-09A	SL-HD-AD-09A	13.5*13.5	6.3
V6	Gen6	SL-V8-HD-A	/	/	/	12.5*12.5	6.1
V8	Gen6、Gen7	SL-V8-HD-A	/	/	/	12.5*12.5	8.1
	Gen8	SL-V8-HD-A	/	/	/	12.5*12.5	8.5
V10	Gen6	SL-blx C8-HD-A	SL-CXA-15-HD-B	/	SL-HD-AD-11A	15.8*15.8	9.9
	Gen7、Gen8	SL-CLL020-HD-A SL-HD-AA-12A SL-HD-AA-12B	SL-CLL02X-HD-B SL-V10-HD-B	SL-HD-AC-12A	SL-HD-AD-12A	13.5*13.5	10.2
V13	Gen6	SL-V13-HD-A	SL-V13-HD-B	/	/	15.8*15.8	13.4
	Gen7、Gen8	SL-CHM-14-HD-A	SL-CHM-14-HD-B	/	SL-HD-AD-16A	19*19	14/14.8
V15	Gen6、Gen8	SL-CXM-18-HD-A	SL-G4-17-HD-B	/	/	21*21	15.2/15.3
V18	Gen7、Gen8	/	SL-S19-HD-B	/	/	24*24	19.2
V22	Gen6、Gen7、Gen8	/	SL-CXM-22-HD-B	/	/	28*28	22/22.6/23.3
Vero 10	Gen6、Gen7、Gen8	自带支架	/	/	/	30.8	9.9
Vero 13	Gen6、Gen7、Gen8	自带支架	SL-Vero13-HD-B	/	/	36.2	13.2
Vero 18	Gen6、Gen7、Gen8	自带支架	SL-Vero18-HD-B	/	/	36.2	18.4
E6 CA (blx C6)	Gen1	SL-blx C6-HD-A SL-HD-AA-08A SL-HD-AA-09A SL-HD-AA-09B	SL-CLU700-HD-B	/	SL-HD-AD-09A	13.35*13.35	6
	Gen2	SL-VestaTW6-HD-A	/	/	/	12.5*12.5	6.1
E8CA (blx C8)	Gen1	SL-blx C8-HD-A SL-HD-AA-11A SL-HD-AA-11B	SL-CXA-15-HD-B	SL-HD-AC-11A	SL-HD-AD-11A	15.85*15.85	8.9
	Gen2	SL-V8-HD-A	/	/	/	12.5*12.5	8.1
E13	Gen1	SL-CXA18-HD-A	SL-CXA-18-HD-B	/	SL-HD-AD-14A	17.85*17.85	12
Vesta TW6	Gen2	SL-VestaTW6-HD-A	/	/	/	12.5*12.5	6.3
Vesta TW9	Gen2	SL-VestaTW9-HD-A	SL-VestaTW9-HD-B	/	/	15.85*15.85	10
DTW4/6/12	Gen2	SL-DTW12-HD-A	/	/	/	12*15	9.3
Vesta TW13	Gen2	/	SL-VestaTW13-HD-B	/	/	18.8*18.8	14.2
Vesta TW15	Gen2	/	SL-VestaTW15-HD-B	/	/	21.3*21.3	18.1

CITIZEN 西铁城

	LED P/N	A HOLDER	B HOLDER	C HOLDER	D HOLDER	Dimensions	LES
CLU028	1201C4、1202C4、1203C4、1204C4	SL-CLL020-HD-A SL-HD-AA-12A SL-HD-AA-12B	SL-CLL02X-HD-B	SL-HD-AC-12A	SL-HD-AD-12A	13.5*13.5	9.8
CLU038	1205C4、1206C4、1208C4、1210C4	SL-CLL03X-HD-A2、 SL-CLL030-HD-A	SL-CLL03X-HD-B	/	SL-HD-AD-17A	19*19	14.5
CLU048	1211C4、1212C4、1216C4、1812C4、1818C4	/	SL-CXM-22-HD-B	/	/	28*28	22.0
CLU701	0303C4、0304C4、1002C4	SL-blx C6-HD-A	SL-CLU700-HD-B	SL-HD-AC-09A	SL-HD-AD-09A	13.5*13.5	6.0
CLU711	1204C4	/	SL-CLU710-HD-B	/	SL-HD-AD-16A	19*19	8.5
CLU721	1206C4	SL-CLL03X-HD-A2	SL-CLU720-HD-B	/	/	19*19	11.0
CLU731	1210C4	/	SL-CLU730-HD-B	/	/	28*28	13.0
CLU0A0	0303C1	SL-CLU0B0-HD-A	/	/	/	11.5*11.5	4.6
CLU0B0	0304C1、0602C1、1201C1、0603C1	SL-CLU0B0-HD-A	/	/	/	11.5*11.5	6.0
CLC020	057A5	/	SL-CLC020-HD-B	/	/	14*19	9.8

CREE 科锐

	LED P/N	A HOLDER	B HOLDER	C HOLDER	D HOLDER	Dimensions	LES
CXA13	CXA1304、CXA1310	SL-CXA13-HD-A SL-HD-AA-08A SL-HD-AA-09A SL-HD-AA-09B	SL-CLU700-HD-B	SL-HD-AC-09A	SL-HD-AD-09A	13.5*13.5	6
CXB13	CXB1310	SL-CXA13-HD-A SL-HD-AA-08A SL-HD-AA-09A SL-HD-AA-09B	SL-CLU700-HD-B	SL-HD-AC-09A	SL-HD-AD-09A	13.5*13.5	6
CXA15	CXA1507、CXA1510、CXA1512	SL-CXA15-HD-A SL-HD-AA-11A SL-HD-AA-11B	SL-CXA15-HD-B	SL-HD-AC-11A	SL-HD-AD-11A SL-HD-AD-11C	15.85*15.85	9
CXB15	CXB1507、CXB1512、CXB1520	SL-CXA15-HD-A SL-HD-AA-11A SL-HD-AA-11B	SL-CXA15-HD-B	SL-HD-AC-11A	SL-HD-AD-11A SL-HD-AD-11C	15.85*15.85	9
CXA18	CXA1816、CXA1820	SL-CXA1820-HD-A	SL-CXA18-HD-B	/	SL-HD-AD-14A	17.85*17.85	12
CXB18	CXB1816、CXB1820	SL-CXA1820-HD-A	SL-CXA18-HD-B	/	SL-HD-AD-14A	17.85*17.85	12
CXA1830	CXA1830	/	SL-CXA1830-HD-B	/	/	17.85*17.85	14
CXB1830	CXB1830	/	SL-CXA1830-HD-B	/	/	17.85*17.85	14
CXA25	CXA2520、CXA2530、CXA2540	SL-CXA2520-HD-A	SL-CXA25-HD-B	/	/	23.85*23.85	19
CXB25	CXB2530、CXB2540	SL-CXA2520-HD-A	SL-CXA25-HD-B	/	/	23.85*23.85	19

LUMINUS 朗明纳斯

	LED P/N	A HOLDER	B HOLDER	C HOLDER	D HOLDER	Dimensions	LES
CXM-3	AC4x	SL-blx C6-HD-A SL-HD-AA-09A SL-HD-AA-09B	SL-CLU700-HD-B	/	SL-HD-AD-09A	13.5*13.5	3.5
CXM-4	AC4x	SL-blx C6-HD-A SL-HD-AA-09A SL-HD-AA-09B	SL-CLU700-HD-B	/	SL-HD-AD-09A	13.5*13.5	4.5
CXM-6	AA02、AA3x	SL-CXM-6-HD-A	/	/	/	13*12	6.3
	AC3x、AC4x、PC32	SL-blx C6-HD-A SL-HD-AA-09A SL-HD-AA-09B	SL-CLU700-HD-B	SL-HD-AC-09A	SL-HD-AD-09A	13.5*13.5	6.3/6.5
CHM-6	XH2x、XH00	SL-blx C6-HD-A SL-HD-AA-09A SL-HD-AA-09B	SL-CLU700-HD-B	SL-HD-AC-09A	SL-HD-AD-09A	13.5*13.5	6.3
	AA0x、AA10	SL-CXM-6-HD-A	/	/	/	13*12	6.3
CXM-7	AA0x	SL-CXM-7-HD-A	/	/	/	13*13	7.5
CXM-9	AA00、AA10、AA3x、AA4x	SL-CXM-9-HD-A	SL-CXM-9-HD-B	/	SL-HD-AD-11B	15*15	9/9.8
	AC00、AC10、AC3x、AC4x、PC32	SL-CLL020-HD-A SL-HD-AA-12A SL-HD-AA-12B	SL-CLU020-HD-B	SL-HD-AC-12A	SL-HD-AD-12A	13.5*13.5	9/9.6/9.8
CHM-9	AA00、AA10、XD20、XD22	SL-CXM-9-HD-A	SL-CXM-9-HD-B	/	SL-HD-AD-11B	15*15	9/9.6
	AC00、AC10、AC3x	SL-CLL020-HD-A SL-HD-AA-12A SL-HD-AA-12B	SL-CLU020-HD-B	/	SL-HD-AD-12A	13.5*13.5	9/9.8
	XH2x	SL-CHM-14-HD-A	SL-CLU710-HD-B	/	SL-HD-AD-16A	19*19	9
CLM-9	AA00、AA3x	SL-CXM-9-HD-A	SL-CXM-9-HD-B	/	SL-HD-AD-11B	15*15	9/9.6
	AC00、AC3x、AC4x	SL-CLL020-HD-A SL-HD-AA-12A SL-HD-AA-12B	SL-CLU020-HD-B	/	SL-HD-AD-12A	13.5*13.5	9/9.6/9.8
CIM-9	AC3x、AC4x	SL-CLL020-HD-A	SL-CLU020-HD-B	/	SL-HD-AD-12A	13.5*13.5	9.6/9.8
CXM-11	AA3x、AA4x	SL-CXM-14-HD-A	SL-CXM-14-HD-B	/	/	18.5*18.5	11.6/11.9
	AC00、AC3x、PC32	SL-CHM-14-HD-A	SL-CLU720-HD-B	/	SL-HD-AD-16A	19*19	11/11.6/11.7
CHM-11	XH2x	SL-CHM-14-HD-A	SL-CLU720-HD-B	/	SL-HD-AD-16A	19*19	11
CXM-14	AA00、AA10	SL-CXM-14-HD-A	SL-CXM-14-HD-B	/	/	18.5*18.5	13.5
	AC00、AC10	SL-CHM-14-HD-A	SL-CHM-14-HD-B	/	SL-HD-AD-16A	19*19	13.5
	AA3x、AA4x	SL-CLL03X-HD-A2	SL-CXM-14-HD-B	/	/	18.5*18.5	14.3/14.5
	AC3x、AC4x	SL-CLL03X-HD-A2	SL-VestaTW13-HD-B	/	SL-HD-AD-16A	19*19	14.3/14.5
CHM-14	AA10	SL-CXM-14-HD-A	SL-CXM-14-HD-B	/	/	18.5*18.5	13.5
	AC10	SL-CHM-14-HD-A	SL-CHM-14-HD-B	/	SL-HD-AD-16A	19*19	13.5
CLM-14	XH2x	/	SL-CLU730-HD-B	/	/	28*28	13.5
	AA3x、AA4x	SL-CLL03X-HD-A2	SL-CXM-14-HD-B	/	/	18.5*18.5	14.3/14.5
CIM-14	AC3x、AC4x	SL-CLL03X-HD-A2	SL-VestaTW13-HD-B	/	SL-HD-AD-16A	19*19	14.3/14.5
	AC3x、AC4x	SL-CLL03X-HD-A2	SL-VestaTW13-HD-B	/	SL-HD-AD-16A	19*19	14.5
CGM-14	AC3x、AC4x	SL-CLL03X-HD-A2	SL-VestaTW13-HD-B	/	SL-HD-AD-16A	19*19	14.5
CXM-18	AA4x、AA02	SL-CXM-18-HD-A	SL-CXM-18-HD-B	/	/	21.5*21.5	17.5/18
CXM-22	AA4x、AA02	/	SL-CXM-22-HD-B	/	/	28*28	22
CHM-22	AA02	/	SL-CXM-22-HD-B	/	/	28*28	22
CIM-22	AA4x	/	SL-CXM-22-HD-B	/	/	28*28	22

	LED P/N	A HOLDER	B HOLDER	C HOLDER	D HOLDER	Dimensions	LES
CLM-22	AA4x-PC32	/	SL-CXM-22-HD-B	/	/	28*28	22
CGM-22	AA4x	/	SL-CXM-22-HD-B	/	/	28*28	22
CDM-6	DW01	/	SL-CDM/CTM-9-HD-B	/	/	15.25*12.25	6.8
CDM-9	DW01	/	SL-CDM/CTM-9-HD-B	/	/	15*12	9.5
CTM-9	TW01	/	SL-CDM/CTM-9-HD-B	/	/	15*12	9.5
CDM-14	DW01	/	SL-CDM/CTM-14-HD-B	/	/	24*20	15.5
CTM-14	TW01	/	SL-CDM/CTM-14-HD-B	/	/	24*20	14.5
CDM-18	DW01	/	SL-CDM/CTM-18-HD-B	/	/	24*20	16.8
CTM-18	TW01	/	SL-CDM/CTM-18-HD-B	/	/	24*20	17.5

LUMILEDS 亮锐(飞利浦)

	LED P/N	A HOLDER	B HOLDER	C HOLDER	D HOLDER	Dimensions	LES
1201	CertaFlux L06_G1/G2	SL-CXA13-HD-A	SL-CLU700-HD-B	/	SL-HD-AD-09A	13.35*13.35	5.5
	CertaFlux L04_G2	SL-bix C6-HD-A	SL-CLU700-HD-B	/	SL-HD-AD-09A	13.35*13.35	4.1
	Fortimo L09_G7N/G7N_HE	SL-CLL020-HD-A	SL-CLL02X-HD-B	/	SL-HD-AD-12A	13.5*13.5	9.8
1202	CertaFlux L09_G1/G2	SL-CXA15-HD-A	SL-CXA15-HD-B	/	SL-HD-AD-11A	15.85*15.85	8.5
	CertaFlux L06_G2	SL-CXA13-HD-A	SL-CLU700-HD-B	SL-HD-AC-09A	SL-HD-AD-09A	13.35*13.35	5.5
	Fortimo L09_G7N/G7N_HE	SL-CLL020-HD-A	SL-CLL02X-HD-B	/	SL-HD-AD-12A	13.5*13.5	9.8
1203	Fortimo L06_G7	SL-105A-HD-A	SL-MINI-HD-B	/	/	15*12	6.5
	CertaFlux L09_G1/G2	SL-CXA15-HD-A	SL-CXA15-HD-B	/	SL-HD-AD-11A	15.85*15.85	8.5
	Fortimo L09_G6_G7	SL-LHC1-1202-HD-A	SL-1916-14-HD-B	/	/	19*16	9
1204	Fortimo L09_G7N/G7N_HE	SL-CLL020-HD-A	SL-CLL02X-HD-B	/	SL-HD-AD-12A	13.5*13.5	9.8
	CertaFlux L12_G1/G2	SL-CXA1820-HD-A	SL-CXA18-HD-B	/	SL-HD-AD-14A	17.85*17.85	12
	CertaFlux L09_G2	SL-CXA15-HD-A	SL-CXA15-HD-B	/	SL-HD-AD-11A	15.85*15.85	8.5
	Fortimo L09_G7N/G7N_HE	SL-CLL020-HD-A	SL-CLL02X-HD-B	/	SL-HD-AD-12A	13.5*13.5	9.8
1205	Fortimo L09_G7	SL-LHC1-1202-HD-A	SL-1916-14-HD-B	/	/	19*16	9
	CertaFlux L12_G1/G2	SL-CXA1820-HD-A	SL-CXA18-HD-B	/	SL-HD-AD-14A	17.85*17.85	12
	Fortimo L13_G6_G7	SL-LHC1-1204-HD-A	SL-LHC1-1208-HD-B	/	SL-HD-AD-18A	20*24	13
1206	Fortimo L15_G7N/G7N_HE	SL-CLL03X-HD-A2/ SL-CLL030-HD-A	SL-CLL03X-HD-B	/	SL-HD-AD-17A	19*19	14.5
	Fortimo L13_G7	SL-LHC1-1204-HD-A	SL-LHC1-1208-HD-B	/	SL-HD-AD-18A	20*24	13
	Fortimo L15_G7N/G7N_HE	SL-CLL03X-HD-A2/ SL-CLL030-HD-A	SL-CLL03X-HD-B	/	SL-HD-AD-17A	19*19	14.5
1208	CertaFlux L14_G1/G2	/	SL-CXA1830-HD-B	/	/	17.85*17.85	14
	Fortimo L15_G7N/G7N_HE	SL-CLL03X-HD-A2/ SL-CLL030-HD-A	SL-CLL03X-HD-B	/	SL-HD-AD-17A	19*19	14.5
	Fortimo L15_G6/G7	SL-LHC1-1208-HD-A	SL-LHC1-1208-HD-B	/	SL-HD-AD-18A	20*24	15
1210	Fortimo L15_G7N/G7N_HE	SL-CLL03X-HD-A2/ SL-CLL030-HD-A	SL-CLL03X-HD-B	/	SL-HD-AD-17A	19*19	14.5
1211	Fortimo L22_G7N/G7N_HE	/	SL-CXM-22-HD-B	/	/	28*28	22
	Fortimo L19_G6_G7	/	SL-CXM-22-HD-B	/	/	28*28	18.5
1212	Fortimo L22_G7N/G7N_HE	/	SL-CXM-22-HD-B	/	/	28*28	22
1216	Fortimo L22_G7N/G7N_HE	/	SL-CXM-22-HD-B	/	/	28*28	22

OSRAM 欧司朗

	LED P/N	A HOLDER	B HOLDER	C HOLDER	D HOLDER	Dimensions	LES
Soleriq S9	GEN3- GEN4	SL-CLL020-HD-A	SL-CLL02X-HD-B	/	SL-HD-AD-12A	13.5*13.5	9.8
Soleriq S13	GEN2- GEN3	SL-CHM-14-HD-A	SL-CHM-14-HD-B	/	SL-HD-AD-16A	19*19	13
Soleriq S15	GEN4	SL-CLL030-HD-A	SL-CLL03X-HD-B	/	SL-HD-AD-16A	19*19	14.7
Soleriq S19	GEN2	SL-CXA2520-HD-A	SL-S19-HD-B	/	/	24*24	17.8

NICHIA 日亚

	LED P/N	A HOLDER	B HOLDER	C HOLDER	D HOLDER	Dimensions	LES
NJCxS024Z	NJCWS024Z- NJCLS024Z	SL-MINI-HD-A	SL-MINI-HD-B	/	/	15*12	7
NJCxL024Z	NJCWL024Z	SL-LHC1-1202-HD-A	SL-1916-14-HD-B	/	SL-HD-AD-12B	19*16	7
NVCxL024Z	NVCWL024Z	SL-1916-14-HD-A	SL-1916-14-HD-B	/	/	19*16	11
NVExJ048Z	NVEWJ048Z- NVELJ048Z	SL-LHC1-1208-HD-A	SL-LHC1-1208-HD-B	/	SL-HD-AD-18A	24*17	14.6
NTCxS024B	NTCWS024B- NTCLS024B	SL-Philips105A-HD-A	SL-MINI-HD-B	/	/	15*12	6.7
NFCxS024B	NFCWS024B	SL-Philips105A-HD-A	SL-MINI-HD-B	/	/	15*12	6.7
NFCxL036B	NFCWL036B- NFCLL036B	SL-LHC1-1202-HD-A	SL-1916-HD-B	/	SL-HD-AD-12B	19*16	8.7
NFCxL060B	NFCWL060B- NFCLL060B	SL-1916-HD-A	SL-1916-HD-B	/	/	19*16	11.5
NFCxJ108B	NFCWJ108B- NFCLJ108B	SL-LHC1-1208-HD-A	SL-LHC1-1208-HD-B	/	SL-HD-AD-18A	24*19	14.6
NFDxJ130B	NFDWJ130B- NFDLJ130B	SL-LHC1-1208-HD-A	SL-LHC1-1208-HD-B	/	SL-HD-AD-18A	24*19	14.6

TRIDONIC 锐高

	LED P/N	A HOLDER	B HOLDER	C HOLDER	D HOLDER	Dimensions	LES
G4-10	/	SL-G4-10-HD-A	SL-G4-10-HD-B	/	SL-HD-AD-12A	/	8.5
G4-17	/	SL-CXM-18-HD-A	SL-G4-17-HD-B	/	/	/	17
G4-23	/	/	SL-G4-23HD-B	/	/	/	23
SLE G7 9mm	/	SL-CLL020-HD-A	SL-CLL02X-HD-B	/	SL-HD-AD-12A	13.5*13.5	9
SLE G7 13mm	/	SL-CHM-14-HD-A	SL-CHM-14-HD-B	/	SL-HD-AD-16A	19*19	13
SLE G7 15mm	/	SL-CLL03X-HD-A2/S L-CLL030-HD-A	SL-CLL03X-HD-B	/	SL-HD-AD-17A	19*19	15

LUMENS 流明

	LED P/N	A HOLDER	B HOLDER	C HOLDER	D HOLDER	Dimensions	LES
EDC-38C	/	/	SL-EDC-38C-HD-B	/	/	/	9.8
EDC-47C	/	/	SL-EDC-47C-HD-B	/	/	/	12.2
EDC-57C-20	/	/	SL-EDC-57C-20-HD-B	/	/	/	13.2
EDC-57C-30	/	/	SL-EDC-57C-30-HD-B	/	/	/	20.1

SAMSUNG 三星

	LED P/N	A HOLDER	B HOLDER	C HOLDER	D HOLDER	Dimensions	LES
LC010C	Gen2	SL-blx C6-HD-A	SL-CLU700-HD-B	SL-HD-AC-09A	SL-HD-AD-09A	13.5*13.5	6
LC020C	Gen2	/	SL-CLU710-HD-B	/	/	19*19	8.5
LC040C	Gen2	SL-CHM-14-HD-A	SL-CLU720-HD-B	/	SL-HD-AD-16A	19*19	11.5
LC006B	Gen3	SL-CLL020-HD-A	SL-V10-HD-B	/	SL-HD-AD-12A	13.5*13.5	8
LC026B	Gen3	SL-CXM-18-HD-A	SL-CXM-18-HD-B	/	/	21.5*21.5	17
LC033B	Gen3	SL-CXM-18-HD-A	SL-CXM-18-HD-B	/	/	21.5*21.5	17

XICATO

	LED P/N	A HOLDER	B HOLDER	C HOLDER	D HOLDER	Dimensions	LES
XTM-9	/	/	SL-XTM-19-HD-B	/	/	/	9
XTM-19	/	/	SL-XTM-19-HD-B	/	/	/	24

I

SL-I Pro
REFLECTOR

无主灯照明-小射灯、天花灯
搭配SL-VI达到低眩光效果

Non Major Lighting – Spot Light, Ceiling Light
Match with SL-VI to Achieve the Best Anti Glare Effect

Optical Lens
光学镜片

Low Glare
低眩光

Non Conductive
防导电

COB Holder
AA支架



SL-030A

Vacuum Aluminum Plating PC
真空镀铝

Φ:30.0mm H:26.15mm Φ:7.8mm

Code 型号	Typ.FWHM 标准角度	Typ.eff 标准效率
SL-03018A	18°	85%
SL-03024A	24°	85%
SL-03036A	36°	85%

CLU701
CLU0B0
CXM-6
CHM-6

CXA13
V6 HD
E6 CA

防眩罩 Anti-glare Trim

SL-RF-AF-040A-RD*
SL-RF-AF-050E-RA*
SL-RF-AF-050B-RW

镜片/COVER:

SL-030-MIX-LENS-C



SL-035C

Vacuum Aluminum Plating PC
真空镀铝

Φ:35.0mm H:26.4mm Φ:7.8mm

Code 型号	Typ.FWHM 标准角度	Typ.eff 标准效率
SL-03518C	18°	86%
SL-03524C	24°	87%
SL-03536C	36°	87%

CLU701	CXA13
CLU050	V6 HD
CXM-6	bix C6
CHM-6	E6 CA

防眩罩 Anti-glare Trim

SL-RF-AF-050A*
SL-RF-AF-070E-RA*
SL-RF-AF-070B-RW

镜片/COVER:

SL-035-MIX-LENS-C



SL-035D

Vacuum Aluminum Plating PC
真空镀铝

Φ:35.0mm H:26.4mm Φ:11.6mm

Code 型号	Typ.FWHM 标准角度	Typ.eff 标准效率
SL-03524D	24°	89%
SL-03536D	36°	89%

CLU028	CXA15
CXM-9	bix C8
CHM-9	E8 CA

防眩罩 Anti-glare Trim

SL-RF-AF-050A*
SL-RF-AF-070E-RA*
SL-RF-AF-070B-RW

镜片/COVER:

SL-035-MIX-LENS-C



SL-045D

Vacuum Aluminum Plating PC
真空镀铝

Φ:45.0mm H:36.7mm Φ:11.4mm

Code 型号	Typ.FWHM 标准角度	Typ.eff 标准效率
SL-04518D	18°	85%
SL-04524D	24°	85%
SL-04536D	36°	85%

CLU028	V10 Gen7
CXM-9	V10 Gen8
CXA15	E8 CA

防眩罩 Anti-glare Trim

SL-RF-AF-070A*
SL-RF-AF-090D-RA*
SL-RF-AF-090A-RW

镜片/COVER:

SL-045-MIX-LENS-C



SL-050E

Vacuum Aluminum Plating PC
真空镀铝

Φ:50.0mm H:41.45mm Φ:11.6mm

Code 型号	Typ.FWHM 标准角度	Typ.eff 标准效率
SL-05018E	18°	85%
SL-05024E	24°	85%
SL-05036E	36°	85%

CLU028
CXM-9
CXA15
V10 Gen7
V10 Gen8
E8 CA

镜片/COVER:

SL-050-MIX-LENS-C



SL REFLECTOR

经典畅销系列

HOT
SALE

高效率反光杯
尺寸角度齐全
通用性强

High Efficiency (> 90%) .
Complete Size&Beam Angle,
High Compatibility





SL-RF-AA-022A

Vacuum Aluminum Plating PC
真空镀铝

Φ:22.0mm H:14.0mm Φ:8.0mm

Code 型号	Typ.FWHM 标准角度	Typ.eff 标准效率
SL-RF-AA-022A-M	17° (配CXM-3) / 24°	89%
SL-RF-AA-022A-F	36°	89%

CLU701
CLU0B0
CXM-3
CXM-6
CHM-6
CXA13
V4 HD
V6 HD
VestaTW6
blx C6



SL-044B

Vacuum Aluminum Plating PC
真空镀铝

Φ:44.0mm H:20.2mm Φ:11.5mm

Code 型号	Typ.FWHM 标准角度	Typ.eff 标准效率
SL-04415B	15°	93%
SL-04425B	25°	93%
SL-04438B	38°	93%
SL-04460B	60°	93%

CLU028
CXM-9
CHM-9
CXA15
V10 Gen6
V10 Gen7
blx C8
E8
VestaTW6
Soleriq S9
105
1202/1203

G4-10
LC020C
LC006B
EDC-38C
NFCxL036B



SL-035A

Vacuum Aluminum Plating PC
真空镀铝

Φ:35.0mm H:21.5mm Φ:8.5mm

Code 型号	Typ.FWHM 标准角度	Typ.eff 标准效率
SL-03515A	15°	90%
SL-03524A	24°	90%
SL-03536A	36°	90%

CLU701
CXM-6
CHM-6
CXA13
V6
blx C6
VestaTW6

LC010C
NJCxS024Z
NTCxS024B



SL-044C

Vacuum Aluminum Plating PC
真空镀铝

Φ:44.0mm H:20.2mm Φ:11.5mm

Code 型号	Typ.FWHM 标准角度	Typ.eff 标准效率
SL-04416C	15°	93%
SL-04426C	25°	93%
SL-04438C	38°	93%
SL-04460C	60°	93%

Vero 10



SL-035B

Vacuum Aluminum Plating PC
真空镀铝

Φ:35.0mm H:17.6mm Φ:11.4mm

Code 型号	Typ.FWHM 标准角度	Typ.eff 标准效率
SL-03520B	20°	91%
SL-03540B	40°	91%
SL-03560B	60°	91%

CLU028
CXM-9
CHM-9
CXA15
V10 Gen6
V10 Gen7
blx C8
E8
VestaTW6
105
1202/1203

G4-10
LC020C
LC006B
EDC-38C
NFCxL036B



SL-045A

Vacuum Aluminum Plating PC
真空镀铝

Φ:45.0mm H:34.1mm Φ:12.0mm

Code 型号	Typ.FWHM 标准角度	Typ.eff 标准效率
SL-04515A	15°	90%
SL-04524A	24°	90%
SL-04538A	38°	90%

CLU028
CXM-9
CHM-9
CXA15
V10 Gen6
V10 Gen7
blx C8
E8
Soleriq S9
105
1202/1203

G4-10
LC020C
LC006B
EDC-38C
NFCxL036B



SL-044A

Vacuum Aluminum Plating PC
真空镀铝

Φ:44.0mm H:20.2mm Φ:8.5mm

Code 型号	Typ.FWHM 标准角度	Typ.eff 标准效率
SL-04413A	13°	93%
SL-04425A	25°	93%
SL-04438A	38°	93%

CLU701
CXM-6
CHM-6
CXA13
V6
blx C6
VestaTW6

LC010C
NJCxS024Z
NJCxS024B



SL-045B

Vacuum Aluminum Plating PC
真空镀铝

Φ:45.0mm H:20.1mm Φ:19.0mm

Code 型号	Typ.FWHM 标准角度	Typ.eff 标准效率
SL-04524B	24°	91%
SL-04550B	50°	91%

CLU038
MEGA
E13
NVExJ048Z
NFCxJ108B
NFDxJ130B



SL-045C

Vacuum Aluminum Plating PC
真空镀铝

Φ:45.0mm H:20.1mm Φ:19.0mm

Code 型号	Typ.FWHM 标准角度	Typ.eff 标准效率
SL-04524C	24°	91%
SL-04550C	50°	91%

CLU038
 CLU721
 CXM-18
 CXA25
 V18 Gen6
 V18 Gen7
 Vero18
 Soteriq S19
 1208
 XTM-19
 LC026B
 LC033B
 EDC-57C-20
 EDC-57C-30
 NVCxL024Z
 NVExH048Z
 NFCxL060B
 NFCxJ108B
 NFDxJ130B



SL-050D

Vacuum Aluminum Plating PC
真空镀铝

Φ:50.0mm H:35.1mm Φ:11.5mm

Code 型号	Typ.FWHM 标准角度	Typ.eff 标准效率
SL-05015D	15°	90%
SL-05024D	24°	90%
SL-05038D	38°	90%
SL-05060D	60°	90%

CLU028
 CXM-9
 CHM-9
 CXA15
 V10 Gen6
 V10 Gen7
 blk C8
 E8
 Soteriq S8
 Soteriq S9
 Soteriq S10
 105
 1202 / 1203
 G4-10
 LC020C
 LC006B
 EDC-38C
 NFCxL036B



SL-050A

Vacuum Aluminum Plating PC
真空镀铝

Φ:50.0mm H:35.1mm Φ:11.5mm

Code 型号	Typ.FWHM 标准角度	Typ.eff 标准效率
SL-05015A	15°	90%
SL-05024A	24°	90%
SL-05038A	38°	90%
SL-05060A	60°	90%

CLU028
 CXM-9
 CHM-9
 CXA15
 V10 Gen6
 V10 Gen7
 blk C8
 E8
 Soteriq S8
 Soteriq S9
 Soteriq S10
 105
 1202 / 1203
 G4-10
 LC020C
 LC006B
 EDC-38C
 NFCxL036B



SL-069A

Vacuum Aluminum Plating PC
真空镀铝

Φ:69.0mm H:46mm Φ:18.0mm

Code 型号	Typ.FWHM 标准角度	Typ.eff 标准效率
SL-06915A	15°	91%
SL-06924A	24°	91%
SL-06938A	38°	91%

CLU038



SL-050B

Vacuum Aluminum Plating PC
真空镀铝

Φ:50.0mm H:35.1mm Φ:11.5mm

Code 型号	Typ.FWHM 标准角度	Typ.eff 标准效率
SL-05015B	15°	90%
SL-05024B	24°	90%
SL-05038B	38°	90%
SL-05060B	60°	90%

Vero10



SL-069B

Vacuum Aluminum Plating PC
真空镀铝

Φ:69.0mm H:45.5mm Φ:19.3mm

Code 型号	Typ.FWHM 标准角度	Typ.eff 标准效率
SL-06918B	18°	91%
SL-06928B	28°	91%
SL-06942B	42°	91%

CXM-18
 Vero18
 V15 Gen6
 V18 Gen6
 1208
 Soteriq S19
 XTM-19
 LC026B
 LC033B
 EDC-57C-30



SL-050C

Vacuum Aluminum Plating PC
真空镀铝

Φ:50.0mm H:35.1mm Φ:14.5mm

Code 型号	Typ.FWHM 标准角度	Typ.eff 标准效率
SL-05020C	20°	90%
SL-05030C	30°	90%

CLU721
 CXM-14
 CHM-14
 CXA18
 Vero13
 V13 Gen6
 1204 / 1205
 LC020C
 LC040C
 EDC-47C
 EDC-57C-20
 NVCxL024Z
 NFCxL060B



SL-069E

Vacuum Aluminum Plating PC
真空镀铝

Φ:69.0mm H:45.5mm Φ:14.5mm

Code 型号	Typ.FWHM 标准角度	Typ.eff 标准效率
SL-06916E	16°	91%
SL-06924E	24°	91%
SL-06938E	38°	91%

CXM-14
 CHM-14
 CXA18
 V13 Gen6
 Vero13
 1204 / 1205
 LC020C
 LC040C
 EDC-47C
 EDC-57C-20
 NVCxL024Z
 NFCxL060B



SL-075A

Vacuum Aluminum Plating PC
真空镀铝

Φ:75.0mm H:54mm Φ:18.0mm

Code 型号	Typ.FWHM 标准角度	Typ.eff 标准效率
SL-07515A	15°	91%
SL-07524A	24°	91%
SL-07538A	38°	91%
SL-07555A	55°	91%

CLU038



SL-095A

Vacuum Aluminum Plating PC
真空镀铝

Φ:95.0mm H:64mm Φ:18.0mm

Code 型号	Typ.FWHM 标准角度	Typ.eff 标准效率
SL-09512A	12°	91%
SL-09524A	24°	91%
SL-09538A	38°	91%

CLU038



SL-075B

Vacuum Aluminum Plating PC
真空镀铝

Φ:75.0mm H:53.5mm Φ:19.3mm

Code 型号	Typ.FWHM 标准角度	Typ.eff 标准效率
SL-07518B	18°	91%
SL-07526B	26°	91%
SL-07538B	38°	91%
SL-07555B	55°	91%

CXM-18
Vero18
V15 Gen6
V18 Gen6
1208
XTM-19
LC026B
LC033B
EDC-57C-30



SL-095B

Vacuum Aluminum Plating PC
真空镀铝

Φ:95.0mm H:63.5mm Φ:19.3mm

Code 型号	Typ.FWHM 标准角度	Typ.eff 标准效率
SL-09515B	15°	91%
SL-09524B	24°	91%
SL-09538B	38°	91%

CXM-18
Vero18
V15 Gen6
V18 Gen6
XTM-19
1208
LC026B
LC033B
EDC-57C-30



SL-075C

Vacuum Aluminum Plating PC
真空镀铝

Φ:75.0mm H:53.5mm Φ:14.5mm

Code 型号	Typ.FWHM 标准角度	Typ.eff 标准效率
SL-07515C	15°	90%
SL-07524C	24°	90%
SL-07538C	38°	90%
SL-07555C	55°	90%

CXM-14
CHM-14
CXA18
V13 Gen6
Vero13
1204/1205
LC020C
LC040C
EDC-47C
EDC-57C-20
NVCxL024Z
NFCxL060B



SL-075F

Vacuum Aluminum Plating PC
真空镀铝

Φ:75.0mm H:39.0mm Φ:15.0mm

Code 型号	Typ.FWHM 标准角度	Typ.eff 标准效率
SL-07515F	15°	90%
SL-07530F	30°	90%
SL-07545F	45°	90%

CXM-14
CHM-14
CXA18
V13 Gen6
Vero13
1204/1205
LC040C
EDC-47C
EDC-57C-20
NVCxL024Z
NFCxL060B

SL-PL-JG
TIR LENS

SL-D
TIR LENS

SL-B
ODR LENS

SL-A
REFLECTOR WITH LENS

II

KA · 商超

Applications: Lighting in Shopping Malls and Supermarket



II

SL-A
Reflector with dome
/ Reflector

反光杯加凸透镜
的主副光斑过渡均匀

单反光杯
效率高

Reflector with dome, improve light pattern uniformity.
Single reflector High efficiency (> 90%)

Vacuum Aluminum Plating PC
真空镀铝



SL-A-050J

Φ:50.0mm H:23.3mm Φ:21.6mm



DOME

SL-A-050J-LENS
凸透镜

COVER

SL-050-CLEAR LENS
透明镜片
SL-050-MIX-LENS-A
磨砂镜片

Code 型号	Typ.FWHM 标准角度	Typ.eff 标准效率
SL-A-050J-S	16° - 22°	87%
SL-A-050J-M	22° - 32°	88%
SL-A-050J-L	38° - 40°	88%

COB LES 6-11mm

SL-050K

Φ:50.0mm H:22.7mm Φ:20.0mm



COVER

SL-050-CLEAR LENS
透明镜片
SL-050-MIX-LENS-A
磨砂镜片

Code 型号	Typ.FWHM 标准角度	Typ.eff 标准效率
SL-050K-S	11° - 24°	91%
SL-050K-M	22° - 30°	91%
SL-050K-F	38° - 51°	90%
SL-050K-L	47° - 50°	91%

COB LES 6-18mm

II

EACH RAY IS BRIGHTER IN SHINLAND
www.shinland.com.cn

★
灯珠的操作功率与光学器件的使用温度以整灯实测为主
The power usage of the COB and temperature of the optical components
are based on the actual testing of the luminaire.

SL-A-062B

Φ:62.0mm H:31.3mm Φ:25.1mm



DOME

SL-A-062B-LENS
凸透镜

COVER

SL-062-CLEAR LENS
透明镜片
SL-062-MIX-LENS-A
磨砂镜片

Code 型号	Typ.FWHM 标准角度	Typ.eff 标准效率
SL-A-062B-S	15°- 17°	83%
SL-A-062B-M	20°- 25°	83%
SL-A-062B-L	32°- 38°	83%

COB LES 6-14mm

SL-062A

Φ:62.0mm H:30.6mm Φ:20.0mm



COVER

SL-062-CLEAR LENS
透明镜片
SL-062-MIX-LENS-A
磨砂镜片

Code 型号	Typ.FWHM 标准角度	Typ.eff 标准效率
SL-062A-S	13°- 15°	93%
SL-062A-M	22°- 24°	93%
SL-062A-L	35°- 38°	93%
SL-062A-W	55°- 60°	93%

COB LES 6-14mm

SL-A-075E

Φ:75.0mm H:41.7mm Φ:28.4mm



DOME

SL-A-075E-LENS
凸透镜

COVER

SL-075-CLEAR LENS
透明镜片
SL-075-MIX-LENS-A
磨砂镜片
SL-075-M / F / MOF /
WOF / FSQ /
WW-LENS-B 异形镜片

Code 型号	Typ.FWHM 标准角度	Typ.eff 标准效率
SL-A-075E-S	13°- 19°	87%
SL-A-075E-M/LM	24° / 28°	89%
SL-A-075E-L	34°- 39°	89%
SL-A-07565-N2	60°-65°	89%

COB LES 6-16.5mm

SL-075I

Φ:75.0mm H:41.0mm Φ:23.6mm



COVER

SL-075-CLEAR LENS
透明镜片
SL-075-MIX-LENS-A
磨砂镜片
SL-075-M / F / MOF /
WOF / FSQ /
WW-LENS-B 异形镜片

Code 型号	Typ.FWHM 标准角度	Typ.eff 标准效率
SL-075I-S	10°- 21°	90%
SL-075I-M	25°- 27°	91%
SL-075I-L	38°- 41°	91%
SL-075I-W	58°- 62°	92%

COB LES 6-20mm

SL-A-069C

Φ:69.0mm H:35.2mm Φ:28.4mm



DOME

SL-A-069C-LENS
凸透镜

COVER

SL-069-CLEAR LENS
透明镜片
SL-069-MIX-LENS-A
磨砂镜片
SL-069-M / F / WOF / FSQ
/ WW-LENS-B 异形镜片

Code 型号	Typ.FWHM 标准角度	Typ.eff 标准效率
SL-A-069C-S	14°- 20°	87%
SL-A-069C-M	27°- 30°	88%
SL-A-069C-L	37°- 40°	88%

COB LES 6-16mm

SL-069D

Φ:69.0mm H:34.2mm Φ:23.6mm



COVER

SL-069-CLEAR LENS
透明镜片
SL-069-MIX-LENS-A
磨砂镜片
SL-069-M / F /
WOF / FSQ
/ WW-LENS-B
异形镜片

Code 型号	Typ.FWHM 标准角度	Typ.eff 标准效率
SL-069D-S	8°- 23°	91%
SL-069D-M	26°- 29°	92%
SL-069D-L	38°- 42°	92%
SL-069D-W	55°- 60°	92%

COB LES 6-20mm

SL-A-085A

Φ:85.0mm H:42.7mm Φ:31.0mm



DOME

SL-A-085A-LENS
凸透镜

COVER

SL-085-CLEAR LENS
透明镜片
SL-085-MIX-LENS-A
磨砂镜片

Code 型号	Typ.FWHM 标准角度	Typ.eff 标准效率
SL-A-085A-S	13°- 17°	87%
SL-A-085A-M	23°- 25°	88%
SL-A-085A-L	37°- 40°	88%

COB LES 9-18mm

SL-085B

Φ:85.0mm H:42.0mm Φ:25.5mm



COVER

SL-085-CLEAR LENS
透明镜片
SL-085-MIX-LENS-A
磨砂镜片

Code 型号	Typ.FWHM 标准角度	Typ.eff 标准效率
SL-085B-S	9°- 18°	90%
SL-085B-M	22°- 24°	92%
SL-085B-L	35°- 40°	93%
SL-085B-W	56°- 61°	93%

COB LES 9-20mm

SL-A-092C

Φ:92.0mm H:46.2mm Φ:31.0mm



DOME

SL-A-092C-LENS
凸透镜

COVER

SL-092-CLEAR LENS
透明镜片
SL-092-MIX-LENS-A
磨砂镜片
SL-092-M / F / WOF / FSQ
/ WW-LENS-B 异形镜片

Code 型号	Typ.FWHM 标准角度	Typ.eff 标准效率
SL-A-092C-S	11°- 15°	86%
SL-A-092C-M	22°- 24°	87%
SL-A-092C-L	37°- 40°	87%

COB LES 9-17.5mm

SL-092D

Φ:92.0mm H:45.5mm Φ:25.7mm



COVER

SL-092-CLEAR LENS
透明镜片
SL-092-MIX-LENS-A
磨砂镜片
SL-092-M / F / WOF
/ FSQ / WW-LENS-B
异形镜片

Code 型号	Typ.FWHM 标准角度	Typ.eff 标准效率
SL-092D-S	8°- 12°	90%
SL-092D-M	21°- 22°	91%
SL-092D-L	38°- 42°	93%
SL-092D-W	57°- 60°	91%

COB LES 9-20mm

SL-A-110A

Φ:110.0mm H:53.7mm Φ:31.0mm



DOME

SL-A-110A-LENS
凸透镜

COVER

SL-110-CLEAR LENS
透明镜片
SL-110-MIX-LENS-A
磨砂镜片

Code 型号	Typ.FWHM 标准角度	Typ.eff 标准效率
SL-A-110A-S	9°-15°	84%
SL-A-110A-M	22°-24°	85%
SL-A-110A-L	35°-40°	85%

COB LES 9-20mm

SL-110B

Φ:110.0mm H:53.6mm Φ:25.6mm



COVER

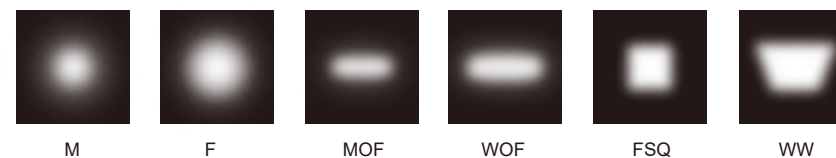
SL-110-CLEAR LENS
透明镜片
SL-110-MIX-LENS-A
磨砂镜片

Code 型号	Typ.FWHM 标准角度	Typ.eff 标准效率
SL-110B-S	8°-12°	90%
SL-110B-M	22°- 25°	91%
SL-110B-L	38°- 42°	91%
SL-110B-W	57°- 63°	87%

COB LES 9-20mm



小角度可搭配多种异形光斑镜片
Many Kinds of Beam Shape Modification as Accessory



II

SL-B ODR LENS

超薄结构设计
Ultra thin Structure

Optical Transparent PC
光学级透明PC



SL-B-045BA

Φ:45.0mm H:11.0mm Φ:8.0mm

Code 型号	Typ.FWHM 标准角度	Typ.eff 标准效率
SL-B-045BA-S	11°	82%

- CLU701
- CXM-6
- CHM-6
- CXM-7
- CXA13
- V6
- blx C6
- 105
- LC010C

异形镜片
Different Optical Cover

SL-045-M-LENS-B
SL-045-F-LENS-B
SL-045-WOF-LENS-B
SL-045-FSQ-LENS-B



SL-B-069BA

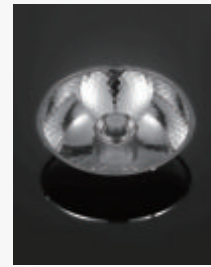
Φ:69.0mm H:16.5mm Φ:12.0mm

Code 型号	Typ.FWHM 标准角度	Typ.eff 标准效率
SL-B-069BA-S	11°	82%

- CLU028
- CXM-9
- CHM-9
- CXA15
- V10 Gen6
- V10 Gen7
- E8
- blx C8
- Soleriq S9
- 105
- 1202/1203
- G4-10
- LC020C
- LC006B
- NJCxS024Z
- NTCxS024B
- NFCxL036B

异形镜片
Different Optical Cover

SL-069-M-LENS-B
SL-069-F-LENS-B
SL-069-WOF-LENS-B
SL-069-FSQ-LENS-B
SL-069-WW-LENS-B



SL-B-075BA

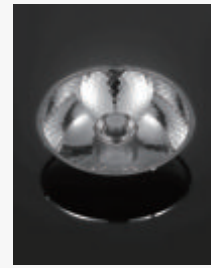
Φ:74.7mm H:17.5mm Φ:12.0mm

Code 型号	Typ.FWHM 标准角度	Typ.eff 标准效率
SL-B-075BA-S	11°	87%
SL-B-075BA-M	22°	85%

- CLU028
- CXM-9
- CHM-9
- CXA15
- V10 Gen6
- V10 Gen7
- E8
- blx C8
- Soleriq S9
- 105
- 1202/1203
- G4-10
- LC020C
- LC006B
- NJCxS024Z
- NTCxS024B
- NFCxL036B

异形镜片
Different Optical Cover

SL-075-M-LENS-B
SL-075-F-LENS-B
SL-075-MOF-LENS-B
SL-075-WOF-LENS-B
SL-075-FSQ-LENS-B
SL-075-WW-LENS-B



SL-B-075BB

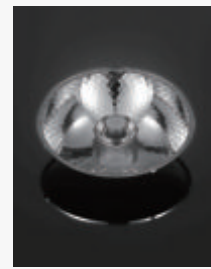
Φ:74.7mm H:17.5mm Φ:14.0mm

Code 型号	Typ.FWHM 标准角度	Typ.eff 标准效率
SL-B-075BB-S	14°	82%
SL-B-075BB-M	22°	84%

- CXA18
- Vero 13
- LC040C
- NFCWL060B
- NFCLL060B
- NVCWL024Z
- NVCLL024Z

异形镜片
Different Optical Cover

SL-075-M-LENS-B
SL-075-F-LENS-B
SL-075-MOF-LENS-B
SL-075-WOF-LENS-B
SL-075-FSQ-LENS-B
SL-075-WW-LENS-B



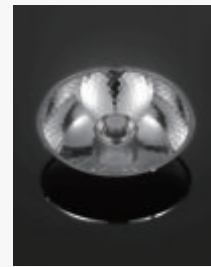
SL-B-085BA

Φ:85.0mm H:18.1mm Φ:16.0mm

Code 型号	Typ.FWHM 标准角度	Typ.eff 标准效率
SL-B-085BA-S	13°	85%
SL-B-085BA-M	22°	85%

- CLU038
- 1208
- G4-17
- E13
- LC026B
- LC033B
- NVEXJ048Z
- NFCxJ108B

异形镜片
Different Optical Cover



SL-B-092BA

Φ:92.0mm H:20.0mm Φ:17.4mm

Code 型号	Typ.FWHM 标准角度	Typ.eff 标准效率
SL-B-092BA-S	13°	82%

- CLU038
- 1208
- E13
- LC026B
- LC033B
- NVEXJ048Z
- NFCxJ108B

异形镜片
Different Optical Cover

SL-092-M-LENS-B
SL-092-F-LENS-B
SL-092-WOF-LENS-B
SL-092-FSQ-LENS-B
SL-092-WW-LENS-B

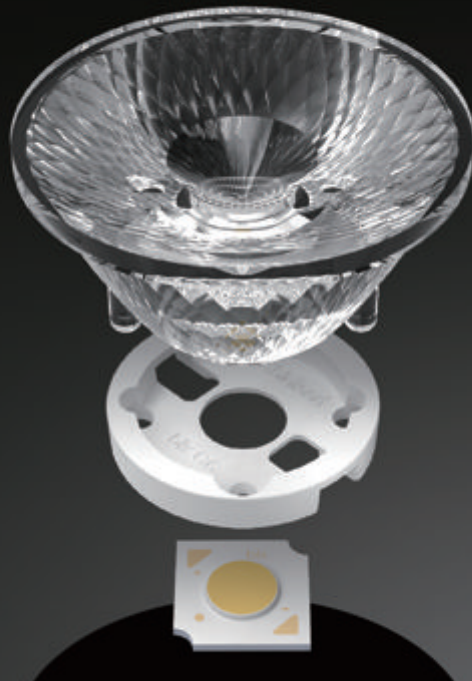
II

SL-D TIR LENS

超强控光能力
K值高

Strong in Light Control,
High Central Intensity

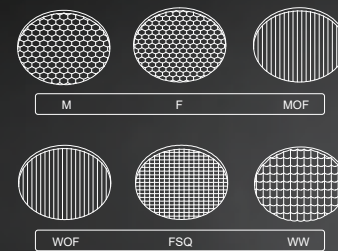
Optical Transparent PC
光学级透明PC



II

SL-D TIR LENS

Optical Transparent PC
光学级透明PC



SL-D-035DA

Φ:35.0mm H:17.6 Φ:12.0mm

Code 型号	Typ.FWHM 标准角度	Typ.eff 标准效率
SL-D-035DA-S	15°-26°	71%
SL-D-035DA-M	22°-28°	87%
SL-D-035DA-F	36°-40°	87%

[CLU028](#) [NJCxS024Z](#)
[CLU701](#) [NTCxS024B](#)
[CLU080](#)
[CXA13](#)
[CXB13](#)
[CXA15](#)
[CXB15](#)
[blx C6](#)
[blx C8](#)
[LC010C](#)



SL-D-050DA

Φ:49.6mm H:21.6 Φ:21.5mm

Code 型号	Typ.FWHM 标准角度	Typ.eff 标准效率
SL-D-050DA-S	17°	94%
SL-D-050DA-M	24°	93%
SL-D-050DA-F	36°	90%

[CLU028](#) [E8](#)
[CLU701](#) [105](#)
[CLU711](#) [1202/1203](#)
[CXM-6](#) [G4-10](#)
[CHM-6](#) [Soleriq S8](#)
[CXM-7](#) [LC010C](#)
[CXM-9](#) [LC020C](#)
[CHM-9](#) [LC006B](#)
[CXA13](#) [XTM-9](#)
[CXA15](#) [NJCxS024Z](#)
[V10 Gen6](#) [NTCxS024B](#)
[V10 Gen7](#) [NFCxL036B](#)



SL-D-044DA

Φ:44.0mm H:20.2 Φ:11.8mm

Code 型号	Typ.FWHM 标准角度	Typ.eff 标准效率
SL-D-044DA-S	15°-19°	72%
SL-D-044DA-M	22°-25°	86%
SL-D-044DA-F	31°-36°	86%

[CLU028](#) [blx C6](#)
[CLU701](#) [blx C8](#)
[CLU080](#) [Soleriq S9](#)
[CXA13](#) [105](#)
[CXA15](#) [1202/1203](#)
[CXM-6](#) [G4-10](#)
[CHM-6](#) [LC020C](#)
[CXM-9](#) [LC006B](#)
[CHM-9](#) [EDC-38C](#)
[V8](#) [NFCxL036B](#)
[V10 Gen6](#)
[V10 Gen7](#)



SL-D-075DA

Φ:75.0mm H:33.0mm Φ:26.7mm

Code 型号	Typ.FWHM 标准角度	Typ.eff 标准效率
SL-D-075DA-S	15°	90%
SL-D-075DA-M	24°	90%
SL-D-075DA-F	38°	90%

[CLU028](#) [V13 Gen7](#) [G4-17](#)
[CLU038](#) [V15 Gen6](#) [G4-10](#)
[CLU711](#) [V18 Gen6](#) [XTM-9](#)
[CLU721](#) [Vero 13](#) [EDC-38C](#)
[CLU731](#) [Vero 18](#) [EDC-47C](#)
[CXM-9](#) [E8](#) [EDC-57C-20](#)
[CXM-14](#) [E13](#) [NFCWL060B](#)
[CXM-18](#) [Soleriq13](#) [NFCLL060B](#)
[CHM-9](#) [1204/1205](#) [NVCWL024Z](#)
[CHM-14](#) [1208](#) [NVCLL024Z](#)
[CXA15](#) [LC020C](#) [NFCWJ108B](#)
[CXA18](#) [LC040C](#) [NFCJ108B](#)
[CXA1830](#) [LC026B](#) [NVExJ048Z](#)
[V13 Gen6](#) [LC033B](#)

★ 小角度可搭配异形镜片
Many Kinds of Beam Shape Modification as Accessory

SL-PL-JG 极光透镜

II

Optical Transparent PMMA
光学级透明PMMA



Efficiency > 90%

UGR < 16

高中心光强 低眩光 高光效

High central intensity, low glare & high efficiency



II

SL-PL
-JG

透镜扣点设计
与前环相扣固定

Buckle lens design and easy to fix
with the front ring

支架线扣设计
固定光源线

Easy to assemble COB
and COB holder



SL-PL-JG-070A

Φ:70.00mm H:33.00mm Φ:27.30mm

Code 型号	Typ.FWHM 标准角度	Typ.eff 标准效率
SL-PL-JG-070A -S	18°	92%
SL-PL-JG-070A -M	24°	92%
SL-PL-JG-070A -F	36°	92%

HOLDERS	COB
SL-HD-AI-18A	Tridonic G7
SL-HD-AI-18B	Lumileds 1208



SL-PL-JG-075A

Φ:75.00mm H:28.60mm Φ:30.58mm

Code 型号	Typ.FWHM 标准角度	Typ.eff 标准效率
SL-PL-JG-075A -S	18°	92%
SL-PL-JG-075A -M	24°	92%
SL-PL-JG-075A -F	36°	92%

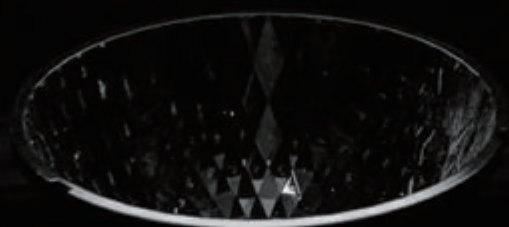
HOLDERS	COB
SL-HD-AI-18A	Tridonic G7
SL-HD-AI-18B	Lumileds 1208





DARK
LIGHT
REFLECTOR

DARK
LIGHT
REFLECTOR
WITH
DOME



打造高端酒店照明设计 搭配SL-IV系列达到超高防眩效果

With SL-IV Series to Achieve The Best Anti-Glare Results



高中心光强
Light with Highly Centered Intensity



旋扣结构
Twist and Lock Structure



光斑截止清晰
Clear in Light Pattern

深防眩UGR < 12






DARK
LIGHT
REFLECTOR

1 : 1

Vacuum Aluminum Plating PC
真空镀铝



	<h3>SL-RF-AG-035A</h3> <p>Φ:35.0mm H:35.0mm Φ:8.0mm</p> <table border="1"> <thead> <tr> <th>Code 型号</th> <th>Typ.FWHM 标准角度</th> <th>Typ.eff 标准效率</th> </tr> </thead> <tbody> <tr> <td>SL-RF-AG-035A-S</td> <td>18°</td> <td>81%</td> </tr> <tr> <td>SL-RF-AG-035A-M</td> <td>25°</td> <td>84%</td> </tr> <tr> <td>SL-RF-AG-035A-F</td> <td>35°</td> <td>84%</td> </tr> </tbody> </table>	Code 型号	Typ.FWHM 标准角度	Typ.eff 标准效率	SL-RF-AG-035A-S	18°	81%	SL-RF-AG-035A-M	25°	84%	SL-RF-AG-035A-F	35°	84%	<p>CLU071 CLU0A0 CLU0B0 CXM-6 CXM-7 CHM-6 CLM-6 CXA13 CXB13 LC010C</p> <p>blx C6 VestaTW6</p>	<p>COVER</p> <ul style="list-style-type: none"> SL-PL-AE-035A 透明镜片 SL-PL-AE-035B 磨砂镜片 SL-PL-AE-035C 淡磨砂镜片
Code 型号	Typ.FWHM 标准角度	Typ.eff 标准效率													
SL-RF-AG-035A-S	18°	81%													
SL-RF-AG-035A-M	25°	84%													
SL-RF-AG-035A-F	35°	84%													
	<h3>SL-RF-AG-045A</h3> <p>Φ:45.0mm H:45.0mm Φ:11.5mm</p> <table border="1"> <thead> <tr> <th>Code 型号</th> <th>Typ.FWHM 标准角度</th> <th>Typ.eff 标准效率</th> </tr> </thead> <tbody> <tr> <td>SL-RF-AG-045A-S</td> <td>18°</td> <td>83%</td> </tr> <tr> <td>SL-RF-AG-045A-M</td> <td>23°</td> <td>83%</td> </tr> <tr> <td>SL-RF-AG-045A-F</td> <td>36°</td> <td>85%</td> </tr> </tbody> </table>	Code 型号	Typ.FWHM 标准角度	Typ.eff 标准效率	SL-RF-AG-045A-S	18°	83%	SL-RF-AG-045A-M	23°	83%	SL-RF-AG-045A-F	36°	85%	<p>CLU028 CLU0A0 CLU0B0 CXM-9 CHM-9 CXA15 V10 Gen6 V10 Gen7 blx C8 1202/1203</p> <p>Soleriq S9 NFCWL036B NFCLL036B</p>	<p>COVER</p> <ul style="list-style-type: none"> SL-PL-AE-045A 透明镜片 SL-PL-AE-045B 磨砂镜片 SL-PL-AE-045C 淡磨砂镜片
Code 型号	Typ.FWHM 标准角度	Typ.eff 标准效率													
SL-RF-AG-045A-S	18°	83%													
SL-RF-AG-045A-M	23°	83%													
SL-RF-AG-045A-F	36°	85%													
	<h3>SL-RF-AG-050A</h3> <p>Φ:50.0mm H:50.0mm Φ:12.0mm</p> <table border="1"> <thead> <tr> <th>Code 型号</th> <th>Typ.FWHM 标准角度</th> <th>Typ.eff 标准效率</th> </tr> </thead> <tbody> <tr> <td>SL-RF-AG-050A-S</td> <td>18°</td> <td>80%</td> </tr> <tr> <td>SL-RF-AG-050A-M</td> <td>23°</td> <td>80%</td> </tr> <tr> <td>SL-RF-AG-050A-F</td> <td>36°</td> <td>80%</td> </tr> </tbody> </table>	Code 型号	Typ.FWHM 标准角度	Typ.eff 标准效率	SL-RF-AG-050A-S	18°	80%	SL-RF-AG-050A-M	23°	80%	SL-RF-AG-050A-F	36°	80%	<p>CLU028 CLU0A0 CLU0B0 CXM-9 CHM-9 CXA15 V10 Gen6 V10 Gen7 blx C8 1202/1203</p> <p>Soleriq S9 NFCWL036B NFCLL036B</p>	<p>COVER</p> <ul style="list-style-type: none"> SL-PL-AE-050A 透明镜片 SL-PL-AE-050B 磨砂镜片
Code 型号	Typ.FWHM 标准角度	Typ.eff 标准效率													
SL-RF-AG-050A-S	18°	80%													
SL-RF-AG-050A-M	23°	80%													
SL-RF-AG-050A-F	36°	80%													

DARK
LIGHT
REFLECTOR

1 : 0.8

Vacuum Aluminum Plating PC
真空镀铝

SL-RF-AG-028B

Φ:28.0mm H:22.4mm Φ:8.0mm

Code 型号	Typ.FWHM 标准角度	Typ.eff 标准效率
SL-RF-AG-028B-S	18°	85%
SL-RF-AG-028B-M	25°	85%
SL-RF-AG-028B-F	35°	85%

CLU701
CLU0B0
CXM-6
CHM-6
CLM-6
CXA13
CXB13
V6 HD
blx C6
VestaTW6

LC010C

COVER

SL-PL-AE-028A
透明镜片
SL-PL-AE-028B
磨砂镜片
SL-PL-AE-028C
淡磨砂镜片



SL-RF-AG-035B

Φ:35.0mm H:28.0mm Φ:8.0mm

Code 型号	Typ.FWHM 标准角度	Typ.eff 标准效率
SL-RF-AG-035B-S	19°	87%
SL-RF-AG-035B-M	24°	87%
SL-RF-AG-035B-F	36°	87%

CLU701
CLU0A0
CLU0B0
CXM-6
CXM-7
CHM-6
CLM-6
CXA13
CXB13
LC010C

blx C6

VestaTW6

COVER

SL-PL-AE-035A
透明镜片
SL-PL-AE-035B
磨砂镜片
SL-PL-AE-035C
淡磨砂镜片



SL-RF-AG-035C

Φ:35.0mm H:28.0mm Φ:11.6mm

Code 型号	Typ.FWHM 标准角度	Typ.eff 标准效率
SL-RF-AG-035C-M	24°	84%
SL-RF-AG-035C-F	36°	84%

CLU028
CLU0A0
CLU0B0
CXM-9
CHM-9
CXA15
V10 Gen6
V10 Gen7
blx C8
1202/1203

Soleriq S9

NFCWL036B

NFCLL036B

COVER

SL-PL-AE-035A
透明镜片
SL-PL-AE-035B
磨砂镜片
SL-PL-AE-035C
淡磨砂镜片



SL-RF-AG-045B

Φ:45.0mm H:36.0mm Φ:11.4mm

Code 型号	Typ.FWHM 标准角度	Typ.eff 标准效率
SL-RF-AG-045B-S	18°	85%
SL-RF-AG-045B-M	24°	85%
SL-RF-AG-045B-F	36°	85%

CLU028
CLU0A0
CLU0B0
CXM-9
CHM-9
CXA15
V10 Gen6
V10 Gen7
blx C8
1202/1203

Soleriq S9

NFCWL036B

NFCLL036B

COVER

SL-PL-AE-045A
透明镜片
SL-PL-AE-045B
磨砂镜片
SL-PL-AE-045C
淡磨砂镜片



SL-RF-AG-050B

Φ:50.0mm H:40.0mm Φ:12.0mm

Code 型号	Typ.FWHM 标准角度	Typ.eff 标准效率
SL-RF-AG-050B-S	18°	86%
SL-RF-AG-050B-M	24°	86%
SL-RF-AG-050B-F	36°	86%

CLU028
CLU0A0
CLU0B0
CXM-9
CHM-9
CXA15
V10 Gen6
V10 Gen7
blx C8
1202/1203

Soleriq S9

NFCWL036B

NFCLL036B

COVER

SL-PL-AE-050A
透明镜片
SL-PL-AE-050B
磨砂镜片

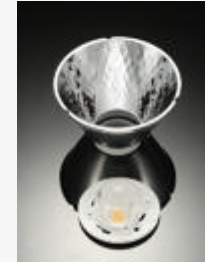
黑光技术防眩 光效更高

Dark Light Anti-glare Technology
Higher Light Efficiency

III

DARK LIGHT REFLECTOR WITH DOME

Vacuum Aluminum Plating PC
真空镀铝



SL-RF-AD-055A

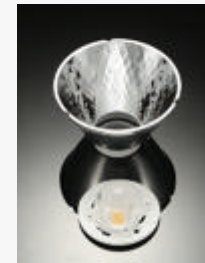
Φ:55.0mm H:33.5mm Φ:23.0mm

Code 型号	Typ.FWHM 标准角度	Typ.eff 标准效率
SL-RF-AD-055A-S	17°	85%
SL-RF-AD-055A-M	24°	85%
SL-RF-AD-055A-F	38°	85%

MATCHED LED 匹配光源
HOLDER 支架型号

CXA15
SL-HD-AD-11A
CLU028 /G4-10
SL-HD-AD-12A
1202/1203
SL-HD-AD-12B

DOME / 凸透镜
SL-PL-AD-020A
COVER / 镜片
SL-PL-AE-055A



SL-RF-AD-065A

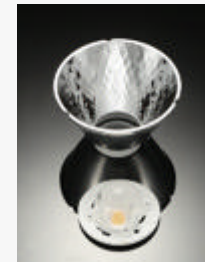
Φ:65.0mm H:38.9mm Φ:26.4mm

Code 型号	Typ.FWHM 标准角度	Typ.eff 标准效率
SL-RF-AD-065A-S	14°- 20°	87%
SL-RF-AD-065A-M	22°- 24°	87%
SL-RF-AD-065A-F	34°- 37°	86%

MATCHED LED 匹配光源
HOLDER 支架型号

CXA15
SL-HD-AD-11A
CLU028 /G4-10
SL-HD-AD-12A
1202/1203
SL-HD-AD-12B

DOME / 凸透镜
SL-PL-AD-027A
COVER / 镜片
SL-PL-AE-065A



SL-RF-AD-075A

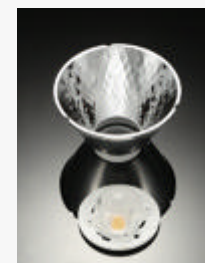
Φ:75.0mm H:45.5mm Φ:30.1mm

Code 型号	Typ.FWHM 标准角度	Typ.eff 标准效率
SL-RF-AD-075A-S	15°- 20°	86%
SL-RF-AD-075A-M	19°- 23°	83%
SL-RF-AD-075A-F	27°- 35°	83%

MATCHED LED 匹配光源
HOLDER 支架型号

CXA18
SL-HD-AD-14A
CLU721/CXM-14
SL-HD-AD-16A
CLU038
SL-HD-AD-17A

DOME / 凸透镜
SL-PL-AD-030B
COVER / 镜片
SL-PL-AE-075A



SL-RF-AD-085A

Φ:85.0mm H:46.3mm Φ:32.5mm

Code 型号	Typ.FWHM 标准角度	Typ.eff 标准效率
SL-RF-AD-085A-S	16°- 19°	88%
SL-RF-AD-085A-M	23°- 26°	89%
SL-RF-AD-085A-F	38°- 42°	89%

MATCHED LED 匹配光源
HOLDER 支架型号

CXA18
SL-HD-AD-14A
CLU721/CXM-14
SL-HD-AD-16A
CLU038
SL-HD-AD-17A

DOME / 凸透镜
SL-PL-AD-032A
COVER / 镜片
SL-PL-AE-085A

SL-050L

Φ:50.0mm H:51.0mm Φ:10.4mm

Code 型号	Typ.FWHM 标准角度	Typ.eff 标准效率
SL-050L-S	8°-13°	80%
SL-050L-M	21°-25°	80%
SL-050L-L	36°-39°	80%

COVER

SL-050-CLEAR LENS
透明镜片

SL-050-MIX-LENS-A
磨砂镜片

MATCHED LED

- CLU028
- CLU701
- CXM-6
- CHM-6
- CXM-7
- CXM-9
- CHM-9
- CXA13
- CXA15
- C6
- V10 Gen6
- V10 Gen7
- E8
- blx C6
- blx C8
- Soleriq S9
- 105
- 1202/1203
- G4-10
- LC006B
- LC010C
- LC020C
- NJCxS024Z
- NTCxS024B
- NFCxL036B

III

DARK LIGHT REFLECTOR



IV

SL-RF-AF ANTI-GLARE TRIM

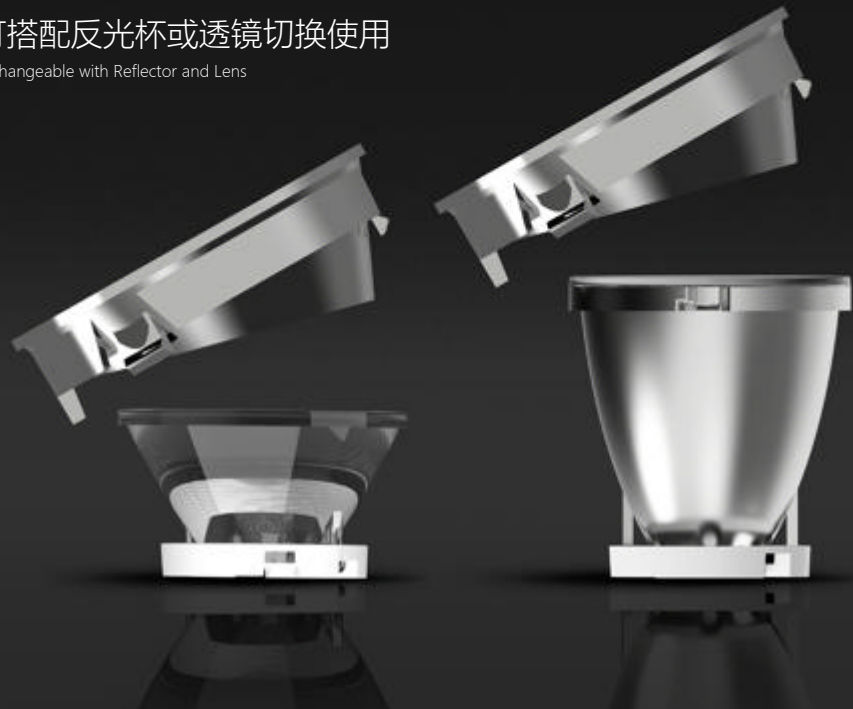
为高防眩要求空间 提供系统化产品方案

Provide Systematic Product Solutions for
Spaces With High Anti-Glare Requirements



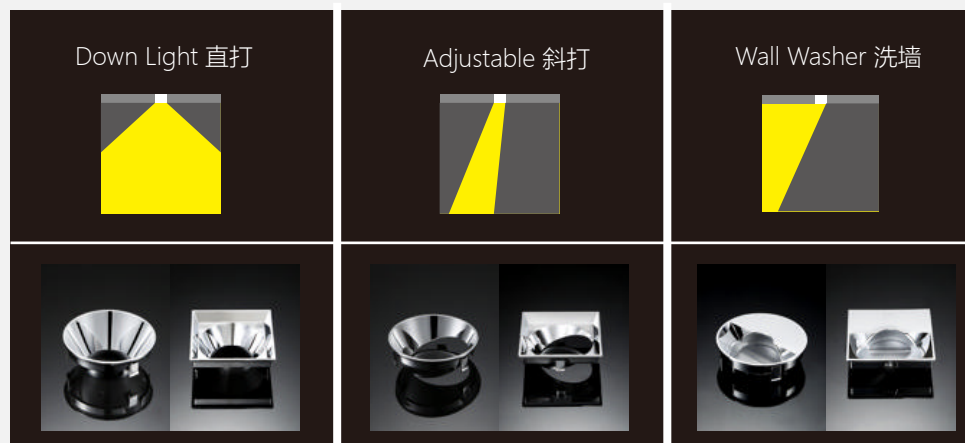
可搭配反光杯或透镜切换使用

Exchangeable with Reflector and Lens



三种应用方式

3 Different Applications



SL-RF-AF-030A

Vacuum Aluminum Plating PC
真空镀铝

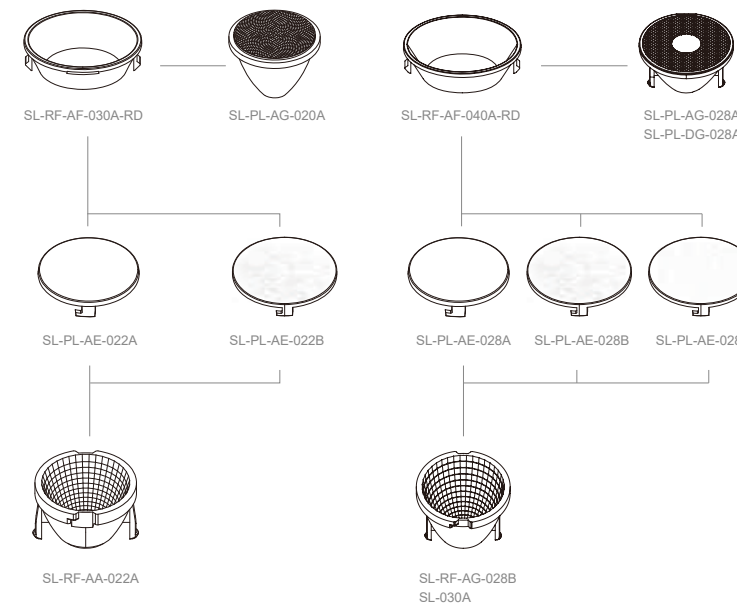
Φ:30.0mm H:8.2mm Φ:19.8mm



SL-RF-AF-040A

Vacuum Aluminum Plating PC
真空镀铝

Φ:40.0mm H:11mm Φ:28mm



L001 珍珠白
L a b
98.30 -0.71 1.24

Y003 象牙白
L a b
96.97 -1.15 2.55

L201 月光银
L a b
93.85 -0.45 2.16

Y204 亚麻银
L a b
90.66 -0.70 1.66

Y206 神秘银
L a b
78.29 -0.53 -0.15

L304 香槟金
L a b
87.30 -1.77 43.40

L301 土豪金
L a b
76.91 17.15 68.18

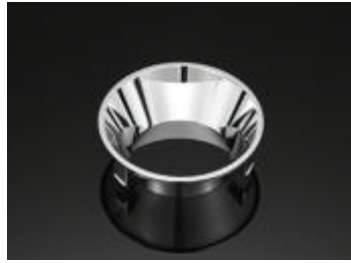
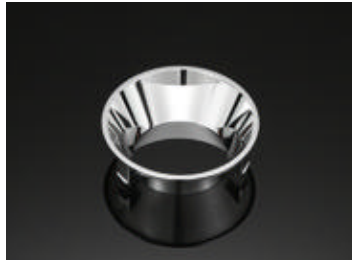
L401 魅惑金
L a b
61.41 45.59 50.96

L501 孔雀绿
L a b
60.50 -5.31 21.41

L102 耀目黑
L a b
66.50 -0.90 1.21

L103 玛瑙黑
L a b
30.29 -0.02 2.24

Y103 深空黑
L a b
24.63 0.04 -0.89



SL-RF-AF-050A

Vacuum Aluminum Plating PC
真空镀铝

Φ:50.0mm H:13.7mm Φ:32.6mm

SL-RF-AF-070A

Vacuum Aluminum Plating PC
真空镀铝

Φ:70.0mm H:22.8mm Φ:43.0mm



SL-RF-AF-050A



SL-PL-AG-035A
SL-PL-DG-035A



SL-RF-AF-070A



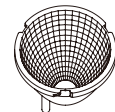
SL-PL-AG-045A
SL-PL-DG-045A



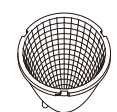
SL-PL-AE-035A SL-PL-AE-035B SL-PL-AE-035C



SL-PL-AE-045A SL-PL-AE-045B SL-PL-AE-045C



SL-RF-AG-035A
SL-RF-AG-035B
SL-RF-AG-035C
SL-035C
SL-035D



SL-RF-AG-045A
SL-RF-AG-045B
SL-045D

L001 珍珠白
L a b
98.30 -0.71 1.24

Y003 象牙白
L a b
96.97 -1.15 2.55

L201 月光银
L a b
93.85 -0.45 2.16

Y204 亚麻银
L a b
90.66 -0.70 1.66

Y206 神秘银
L a b
78.29 -0.53 -0.15

L304 香槟金
L a b
87.30 -1.77 43.40

L301 土豪金
L a b
76.91 17.15 68.18

L401 魅惑金
L a b
61.41 45.59 50.96

L501 孔雀绿
L a b
60.50 -5.31 21.41

L102 耀目黑
L a b
66.50 -0.90 1.21

L103 玛瑙黑
L a b
30.29 -0.02 2.24

Y103 深空黑
L a b
24.63 0.04 -0.89

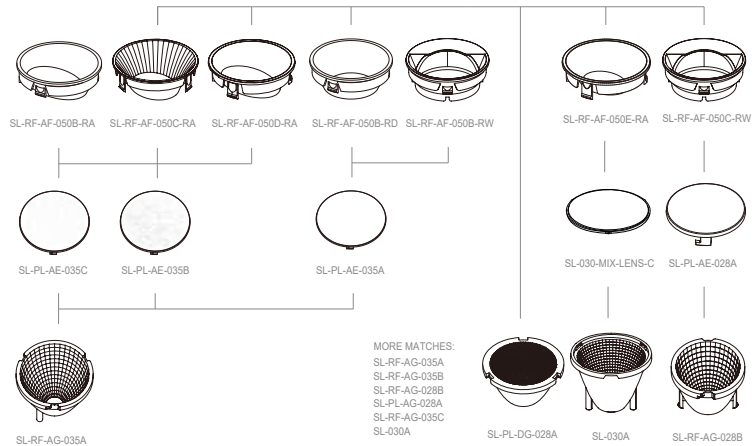


SL-RF-AF-050B/C/D/E

Vacuum Aluminum Plating PC
真空镀铝

Φ: 50.0mm H: 18.0mm

Code 型号	APPLICATION 标准应用
SL-RF-AF-050B-RA	ROUND ADJUSTABLE
SL-RF-AF-050C-RA	ROUND ADJUSTABLE
SL-RF-AF-050D-RA	ROUND ADJUSTABLE
SL-RF-AF-050B-RD	ROUND DOWNLIGHT
SL-RF-AF-050B-RW	ROUND WALLWASHER
SL-RF-AF-050C-RW	ROUND WALLWASHER
SL-RF-AF-050E-RA	ROUND ADJUSTABLE



L001 珍珠白
L a b
98.30 -0.71 1.24

Y003 象牙白
L a b
96.97 -1.15 2.55

L201 月光银
L a b
93.85 -0.45 2.16

Y204 亚麻银
L a b
90.66 -0.70 1.66

Y206 神秘银
L a b
78.29 -0.53 -0.15

L304 香槟金
L a b
87.30 -1.77 43.40

L301 土豪金
L a b
76.91 17.15 68.18

L401 魅惑金
L a b
61.41 45.59 50.96

L501 孔雀绿
L a b
60.50 -5.31 21.41

L102 耀目黑
L a b
66.50 -0.90 1.21

L103 玛瑙黑
L a b
30.29 -0.02 2.24

Y103 深空黑
L a b
24.63 0.04 -0.89



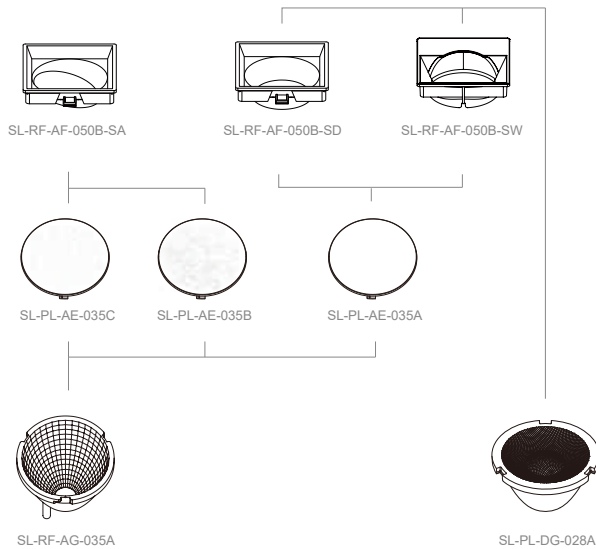
SL-RF-AF-050B

Vacuum Aluminum Plating PC

L: 50.0mm W: 50.0mm H: 18.0mm

真空镀铝

Code 型号	APPLICATION 标准应用
SL-RF-AF-050B-SA	SQUARE ADJUSTABLE
SL-RF-AF-050B-SD	SQUARE DOWNLIGHT
SL-RF-AF-050B-SW	SQUARE WALLWASHER



L001 珍珠白
L a b
98.30 -0.71 1.24

Y003 象牙白
L a b
96.97 -1.15 2.55

L201 月光银
L a b
93.85 -0.45 2.16

Y204 亚麻银
L a b
90.66 -0.70 1.66

Y206 神秘银
L a b
78.29 -0.53 -0.15

L304 香槟金
L a b
87.30 -1.77 43.40

L301 土豪金
L a b
76.91 17.15 68.18

L401 魅惑金
L a b
61.41 45.59 50.96

L501 孔雀绿
L a b
60.50 -5.31 21.41

L102 耀目黑
L a b
66.50 -0.90 1.21

L103 玛瑙黑
L a b
30.29 -0.02 2.24

Y103 深空黑
L a b
24.63 0.04 -0.89



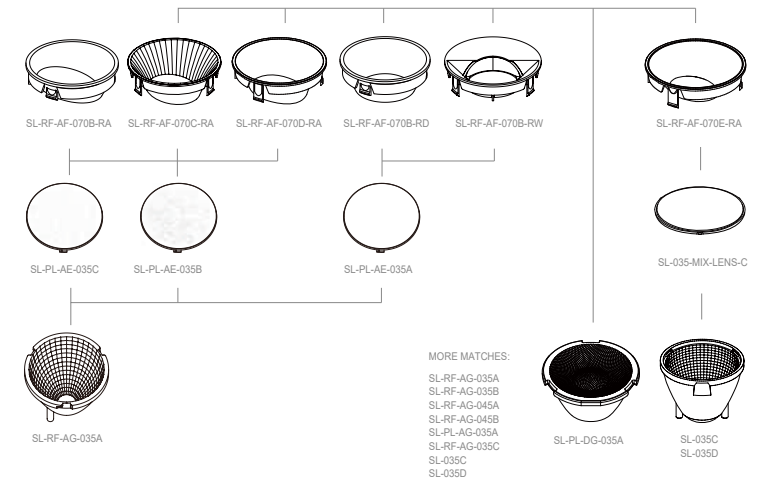
SL-RF-AF-070B/C/D/E

Vacuum Aluminum Plating PC

Φ: 70.0mm H: 27.0mm

真空镀铝

Code 型号	APPLICATION 标准应用
SL-RF-AF-070B-RA	ROUND ADJUSTABLE
SL-RF-AF-070C-RA	ROUND ADJUSTABLE
SL-RF-AF-070D-RA	ROUND DOWNLIGHT
SL-RF-AF-070B-RD	ROUND ADJUSTABLE
SL-RF-AF-070B-RW	ROUND WALLWASHER
SL-RF-AF-070E-RA	ROUND ADJUSTABLE



L001 珍珠白
L a b
98.30 -0.71 1.24

Y003 象牙白
L a b
96.97 -1.15 2.55

L201 月光银
L a b
93.85 -0.45 2.16

Y204 亚麻银
L a b
90.66 -0.70 1.66

Y206 神秘银
L a b
78.29 -0.53 -0.15

L304 香槟金
L a b
87.30 -1.77 43.40

L301 土豪金
L a b
76.91 17.15 68.18

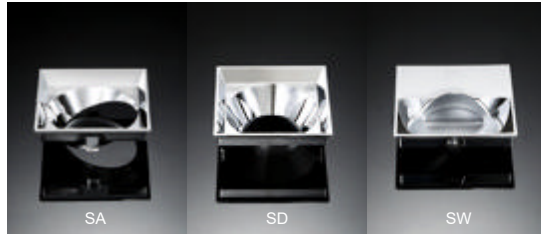
L401 魅惑金
L a b
61.41 45.59 50.96

L501 孔雀绿
L a b
60.50 -5.31 21.41

L102 耀目黑
L a b
66.50 -0.90 1.21

L103 玛瑙黑
L a b
30.29 -0.02 2.24

Y103 深空黑
L a b
24.63 0.04 -0.89



SL-RF-AF-070B

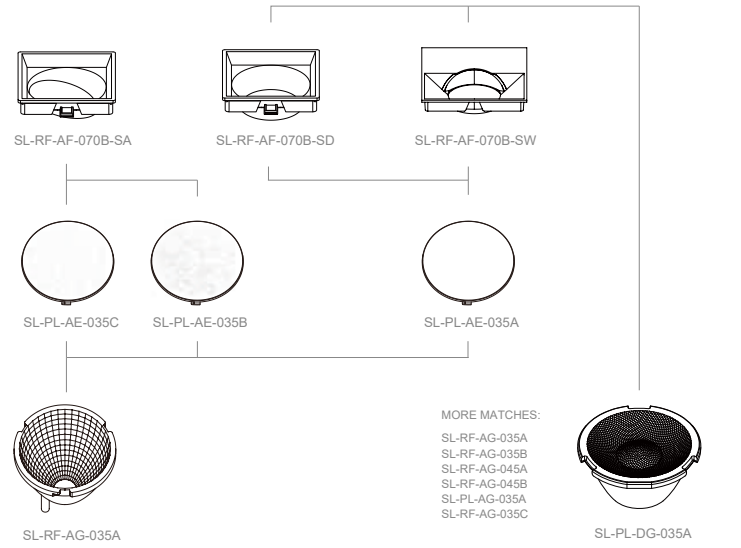
Vacuum Aluminum Plating PC

L: 70.0mm W: 70.0mm H: 27.0mm

真空镀铝



Code 型号	APPLICATION 标准应用
SL-RF-AF-070B-SA	SQUARE ADJUSTABLE
SL-RF-AF-070B-SD	SQUARE DOWNLIGHT
SL-RF-AF-070B-SW	SQUARE WALLWASHER



L001 珍珠白
L a b
98.30 -0.71 1.24

Y003 象牙白
L a b
96.97 -1.15 2.55

L201 月光银
L a b
93.85 -0.45 2.16

Y204 亚麻银
L a b
90.66 -0.70 1.66

Y206 神秘银
L a b
78.29 -0.53 -0.15

L304 香槟金
L a b
87.30 -1.77 43.40

L301 土豪金
L a b
76.91 17.15 68.18

L401 魅惑金
L a b
61.41 45.59 50.96

L501 孔雀绿
L a b
60.50 -5.31 21.41

L102 耀目黑
L a b
66.50 -0.90 1.21

L103 玛瑙黑
L a b
30.29 -0.02 2.24

Y103 深空黑
L a b
24.63 0.04 -0.89



SL-RF-AF-090A/B/C/D

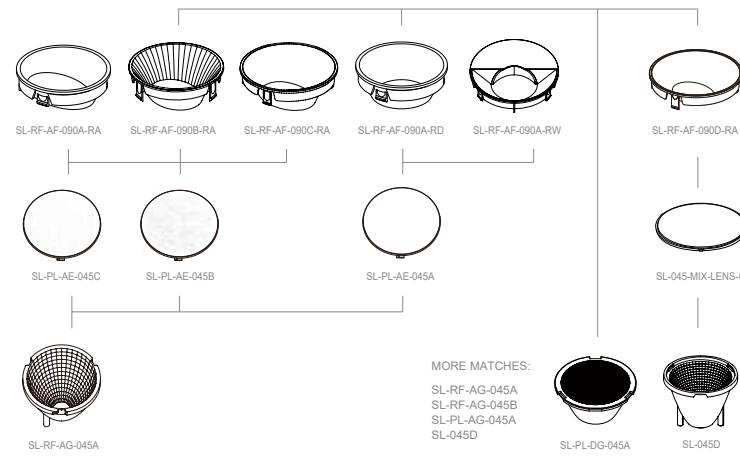
Vacuum Aluminum Plating PC

Φ: 90.0mm H: 35.0mm

真空镀铝



Code 型号	APPLICATION 标准应用
SL-RF-AF-090A-RA	ROUND ADJUSTABLE
SL-RF-AF-090B-RA	ROUND ADJUSTABLE
SL-RF-AF-090C-RA	ROUND ADJUSTABLE
SL-RF-AF-090A-RD	ROUND DOWNLIGHT
SL-RF-AF-090A-RW	ROUND WALLWASHER
SL-RF-AF-090D-RA	ROUND ADJUSTABLE



L001 珍珠白
L a b
98.30 -0.71 1.24

Y003 象牙白
L a b
96.97 -1.15 2.55

L201 月光银
L a b
93.85 -0.45 2.16

Y204 亚麻银
L a b
90.66 -0.70 1.66

Y206 神秘银
L a b
78.29 -0.53 -0.15

L304 香槟金
L a b
87.30 -1.77 43.40

L301 土豪金
L a b
76.91 17.15 68.18

L401 魅惑金
L a b
61.41 45.59 50.96

L501 孔雀绿
L a b
60.50 -5.31 21.41

L102 耀目黑
L a b
66.50 -0.90 1.21

L103 玛瑙黑
L a b
30.29 -0.02 2.24

Y103 深空黑
L a b
24.63 0.04 -0.89



SL-RF-AF-090A

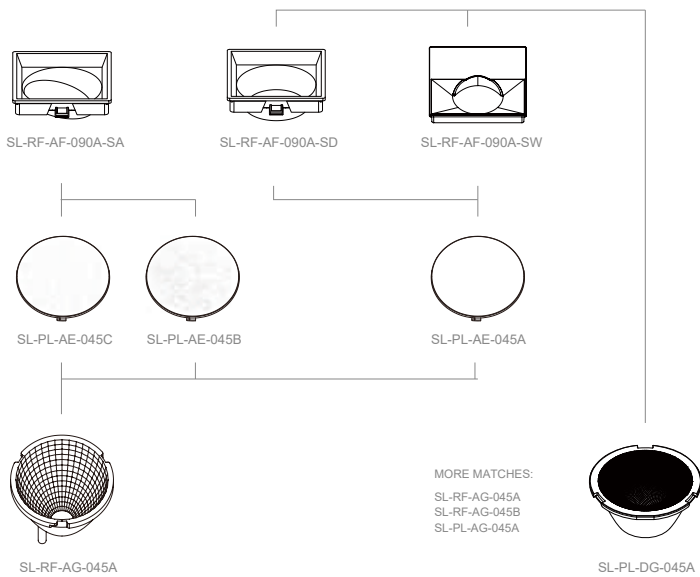
Vacuum Aluminum Plating PC

L: 90.0mm W: 90.0mm H: 35.0mm

真空镀铝



Code 型号	APPLICATION 标准应用
SL-RF-AF-090A-SA	SQUARE ADJUSTABLE
SL-RF-AF-090A-SD	SQUARE DOWNLIGHT
SL-RF-AF-090A-SW	SQUARE WALLWASHER



L001 珍珠白
L a b
98.30 -0.71 1.24

Y003 象牙白
L a b
96.97 -1.15 2.55

L201 月光银
L a b
93.85 -0.45 2.16

Y204 亚麻银
L a b
90.66 -0.70 1.66

Y206 神秘银
L a b
78.29 -0.53 -0.15

L304 香槟金
L a b
87.30 -1.77 43.40

L301 土豪金
L a b
76.91 17.15 68.18

L401 魅惑金
L a b
61.41 45.59 50.96

L501 孔雀绿
L a b
60.50 -5.31 21.41

L102 耀目黑
L a b
66.50 -0.90 1.21

L103 玛瑙黑
L a b
30.29 -0.02 2.24

Y103 深空黑
L a b
24.63 0.04 -0.89



SL-RF-AF-115A-RA

Vacuum Aluminum Plating PC

Φ:115.0mm H:42.0mm

真空镀铝



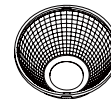
Code 型号	APPLICATION 标准应用
SL-RF-AF-115A-RA	ROUND ADJUSTABLE



SL-RF-AF-115A-RA



SL-062-MIXING LENS



SL-062A

L001 珍珠白
L a b
98.30 -0.71 1.24

Y003 象牙白
L a b
96.97 -1.15 2.55

L201 月光银
L a b
93.85 -0.45 2.16

Y204 亚麻银
L a b
90.66 -0.70 1.66

Y206 神秘银
L a b
78.29 -0.53 -0.15

L304 香槟金
L a b
87.30 -1.77 43.40

L301 土豪金
L a b
76.91 17.15 68.18

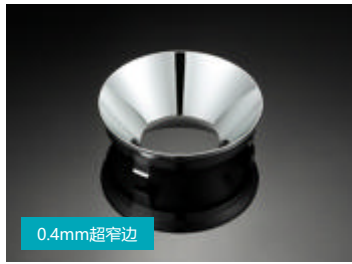
L401 魅惑金
L a b
61.41 45.59 50.96

L501 孔雀绿
L a b
60.50 -5.31 21.41

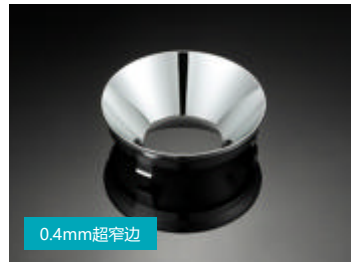
L102 耀目黑
L a b
66.50 -0.90 1.21

L103 玛瑙黑
L a b
30.29 -0.02 2.24

Y103 深空黑
L a b
24.63 0.04 -0.89



0.4mm超窄边



0.4mm超窄边

SL-RF-AF-050F-RD

Vacuum Aluminum Plating PC
真空镀铝

Φ:50.00mm H:15.00mm Φ:23.80mm

SL-RF-AF-070F-RD

Vacuum Aluminum Plating PC
真空镀铝

Φ:70.0mm H:22.0mm Φ:33.0mm

产品型号	标准应用
SL-RF-AF-050F-RD	ROUND DOWNLIGHT

产品型号	标准应用
SL-RF-AF-070F-RD	ROUND DOWNLIGHT



SL-RF-AF-050F-RD



SL-RF-AF-070F-RD



SL-PL-JY-028A



SL-PL-JY-035A



SL-PL-DG-028A



SL-PL-DG-035A



SL-PL-QJ-028A



SL-PL-QJ-028A



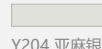
L001 珍珠白
L a b
98.30 -0.71 1.24



Y003 象牙白
L a b
96.97 -1.15 2.55



L201 月光银
L a b
93.85 -0.45 2.16



Y204 亚麻银
L a b
90.66 -0.70 1.66



Y206 神秘银
L a b
78.29 -0.53 -0.15



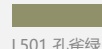
L304 香槟金
L a b
87.30 -1.77 43.40



L301 土豪金
L a b
76.91 17.15 68.18



L401 魅惑金
L a b
61.41 45.59 50.96



L501 孔雀绿
L a b
60.50 -5.31 21.41



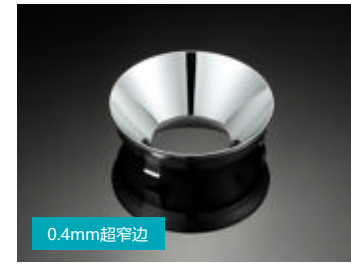
L102 耀目黑
L a b
66.50 -0.90 1.21



L103 玛瑙黑
L a b
30.29 -0.02 2.24



Y103 深空黑
L a b
24.63 0.04 -0.89



0.4mm超窄边



0.4mm超窄边

SL-RF-AF-050G-RD

Vacuum Aluminum Plating PC
真空镀铝

Φ:50.0mm H:15.5mm Φ:29.5mm

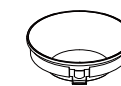
SL-RF-AF-070G-RD

Vacuum Aluminum Plating PC
真空镀铝

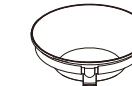
Φ:70.0mm H:21.0mm Φ:38.0mm

产品型号	标准应用
SL-RF-AF-050G-RD	ROUND DOWNLIGHT

产品型号	标准应用
SL-RF-AF-070G-RD	ROUND DOWNLIGHT



SL-RF-AF-050G-RD



SL-RF-AF-070G-RD



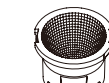
SL-PL-QJ-028A



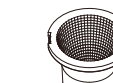
SL-PL-QJ-035A



SL-PL-QJ-040A



SL-RF-XG-028A



SL-RF-XG-035A



SL-RF-XG-035B



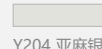
L001 珍珠白
L a b
98.30 -0.71 1.24



Y003 象牙白
L a b
96.97 -1.15 2.55



L201 月光银
L a b
93.85 -0.45 2.16



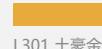
Y204 亚麻银
L a b
90.66 -0.70 1.66



Y206 神秘银
L a b
78.29 -0.53 -0.15



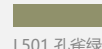
L304 香槟金
L a b
87.30 -1.77 43.40



L301 土豪金
L a b
76.91 17.15 68.18



L401 魅惑金
L a b
61.41 45.59 50.96



L501 孔雀绿
L a b
60.50 -5.31 21.41



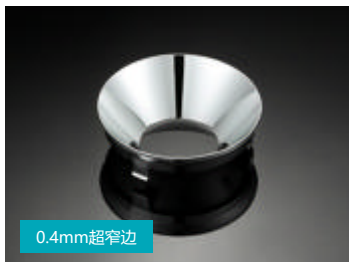
L102 耀目黑
L a b
66.50 -0.90 1.21



L103 玛瑙黑
L a b
30.29 -0.02 2.24



Y103 深空黑
L a b
24.63 0.04 -0.89



0.4mm超窄边

SL-RF-AF-090G-RD

Vacuum Aluminum Plating PC

Φ:90.0mm H:26.0mm Φ:48.1mm

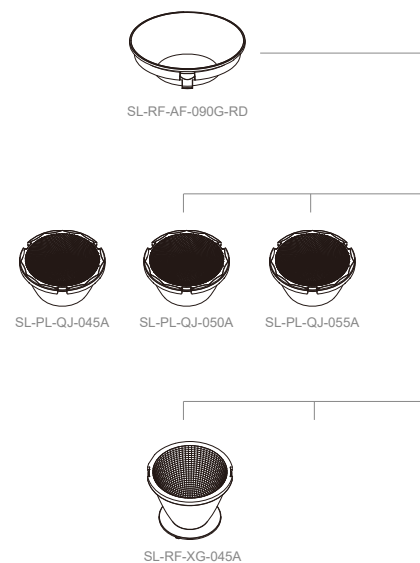
真空镀铝

产品型号

标准应用

SL-RF-AF-090G-RD

ROUND DOWNLIGHT



L001 珍珠白
L a b
98.30 -0.71 1.24

Y003 象牙白
L a b
96.97 -1.15 2.55

L201 月光银
L a b
93.85 -0.45 2.16

Y204 亚麻银
L a b
90.66 -0.70 1.66

Y206 神秘银
L a b
78.29 -0.53 -0.15

L304 香槟金
L a b
87.30 -1.77 43.40

L301 土豪金
L a b
76.91 17.15 68.18

L401 魅惑金
L a b
61.41 45.59 50.96

L501 孔雀绿
L a b
60.50 -5.31 21.41

L102 耀目黑
L a b
66.50 -0.90 1.21

L103 玛瑙黑
L a b
30.29 -0.02 2.24

Y103 深空黑
L a b
24.63 0.04 -0.89

SL-RF-AE
PROFILE LINEAR II

SL-E
PROFILE LINEAR

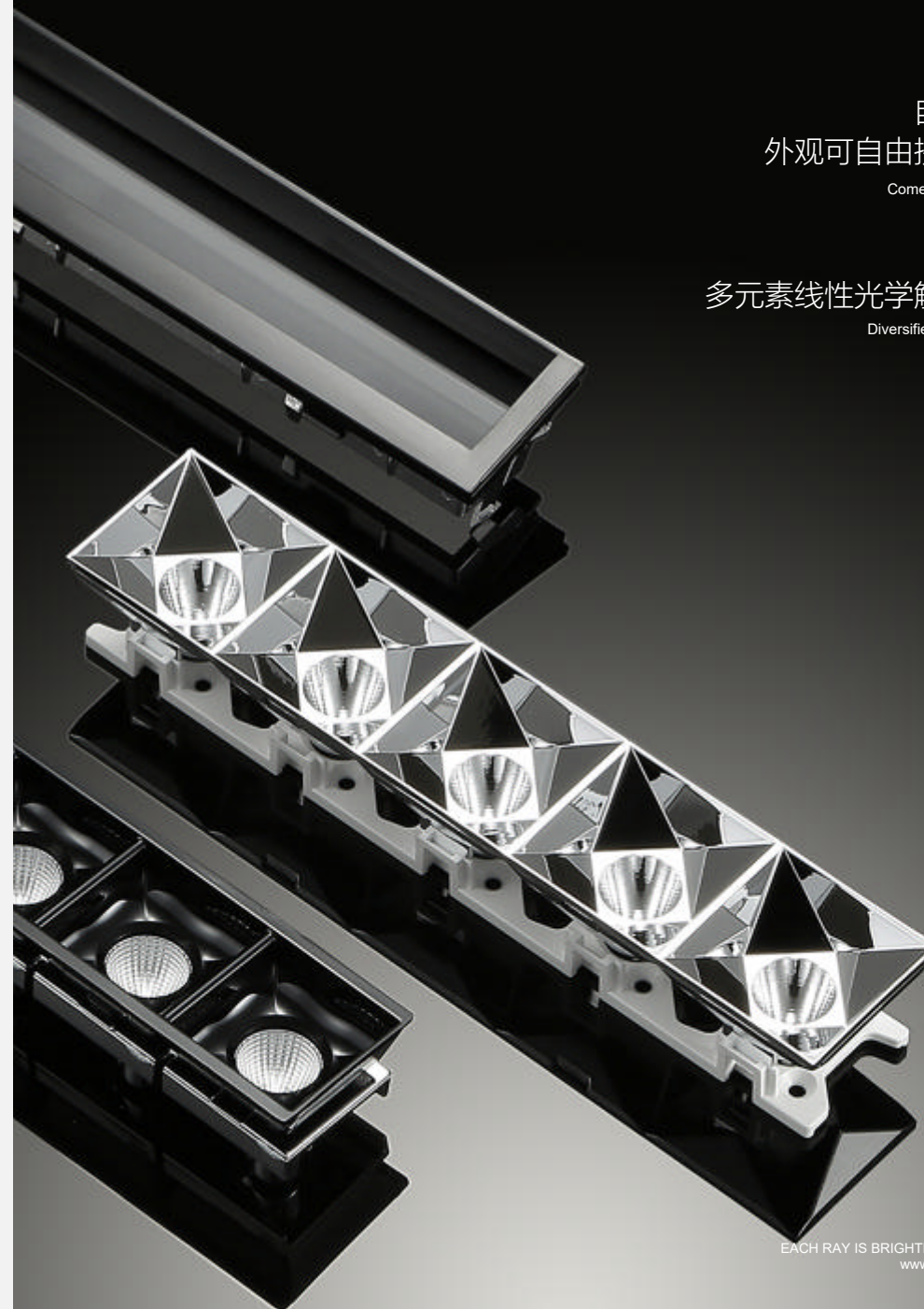


自带防眩
外观可自由拼接设计

Comes with Anti-glare
Freely Spliced

多元素线性光学解决方案

Diversified Linear Optical
Solutions

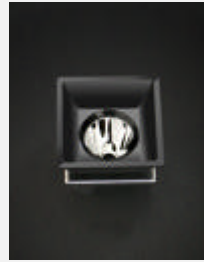


EACH RAY IS BRIGHTER IN SHINLAND
www.shinland.com.cn

SL-E-025EA

Vacuum Aluminum Plating PC
真空镀铝

L:27.4mm W:27.4mm H:21.9mm



SL-E-132EA

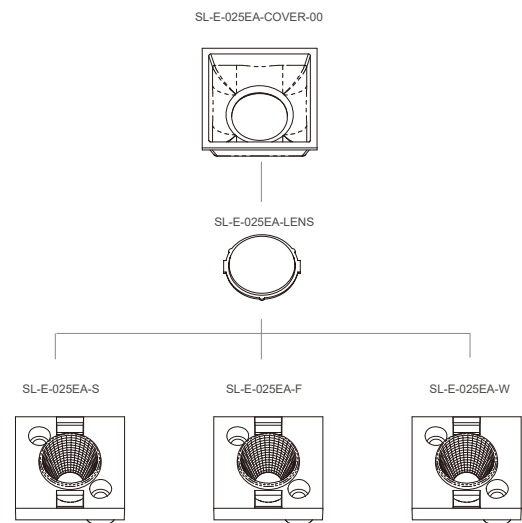
Vacuum Aluminum Plating PC
真空镀铝

L:132.8mm W:30.0mm H:21.9mm

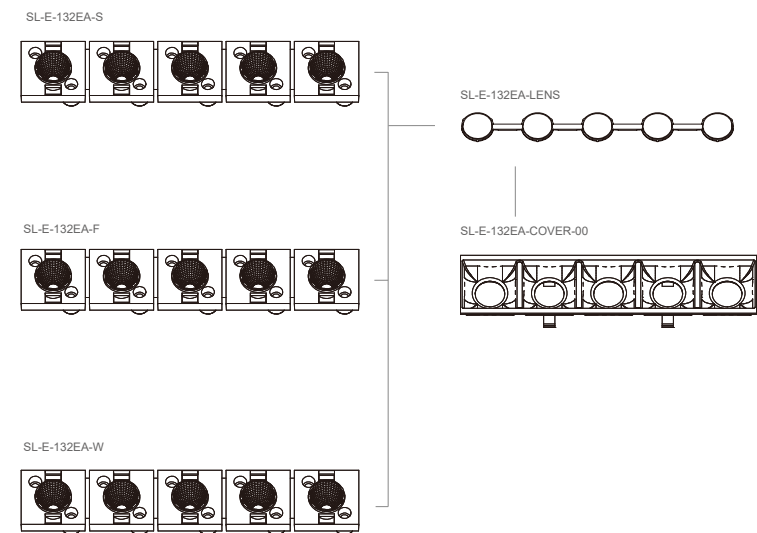


Code 型号	Typ.FWHM 标准角度	Typ.eff 标准效率
SL-E-025EA-S	12°	90%
SL-E-025EA-F	34°	90%
SL-E-025EA-W	48°	90%

Code 型号	Typ.FWHM 标准角度	Typ.eff 标准效率
SL-E-132EA-S	12°	90%
SL-E-132EA-F	34°	90%
SL-E-132EA-W	48°	90%



- XPB35
- XP-L
- XP-G2/3
- XP-E2
- Oslon
- LUXEON T
- LUXEON TX
- LUXEON REBEL ES



- XPB35
- XP-L
- XP-G2/3
- XP-E2
- Oslon
- LUXEON T
- LUXEON TX
- LUXEON REBEL ES

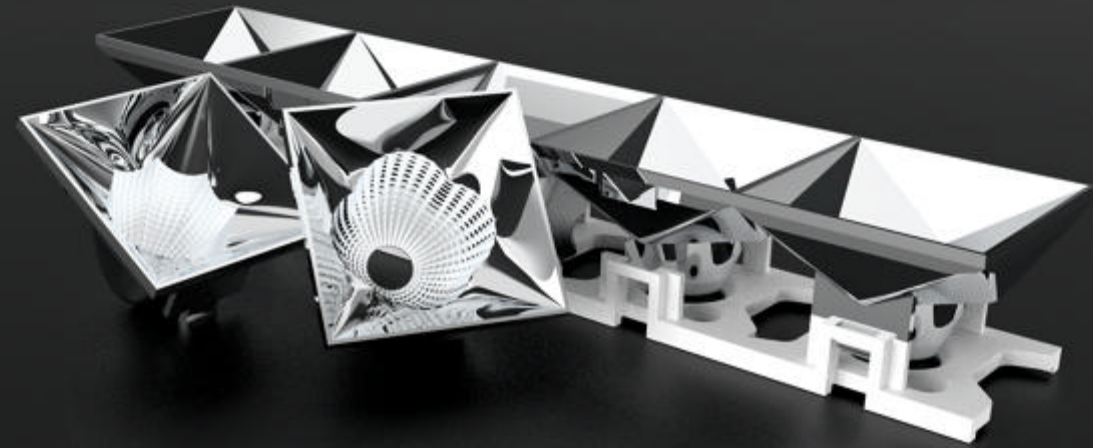
SL-E-132EB

Aluminum Plating PC
真空镀铝

L:132.8mm W:30.0mm H:21.9mm



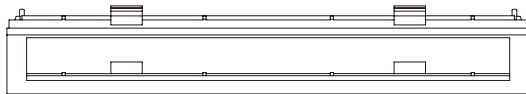
SL-RF-AE
PROFILE LINEAR II



自带防眩
自由拼接
Comes with Anti-glare
Freely Spliced

Code 型号	Typ.FWHM 标准角度	Typ.eff 标准效率
SL-E-132EB	WALL WASH	65%

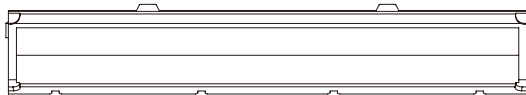
SL-E-132EB-COVER-00



SL-E-132EB-LENS



SL-E-132EB



SL-E-132EB-WW



- XPH25
- XP-L
- XP-G2/3
- XP-E2
- Oslon
- SST-20-WTH
- LUXEON T
- LUXEON TX
- LUXEON REBEL ES

同尺寸
9种光型任意切换

Exchangeable with 9 Different Light Pattern with Same Dimension



Wall Washer

1:3:1



12°



20°



34°



48°

Spot Light



55° * 55°



40° * 65°



40°



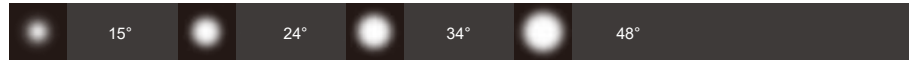
60°

Flood Light

SL-RF-AE-030A

Vacuum Aluminum Plating PC
真空镀铝

L:30.0mm W:30.0mm H:21.15mm



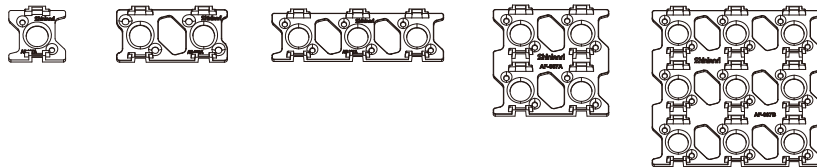
Code 型号	Typ.FWHM 标准角度	Typ.eff 标准效率
SL-RF-AE-030A-S	15°	88%
SL-RF-AE-030A-M	24°	88%
SL-RF-AE-030A-F	34°	88%
SL-RF-AE-030A-W	48°	88%

SL-RF-AE-030A-S SL-RF-AE-030A-M SL-RF-AE-030A-F SL-RF-AE-030A-W



XP-G2/3
XP-E2
SST-20-WTH
Oslon

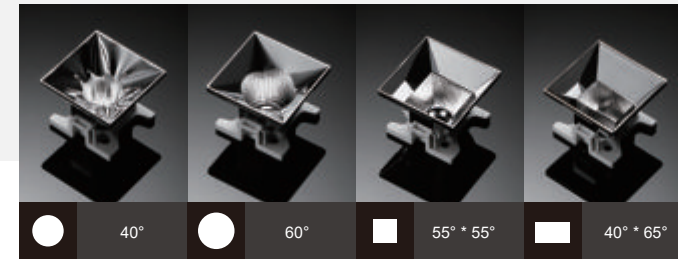
SL-HD-AF-027A SL-HD-AF-053A SL-HD-AF-087A SL-HD-AF-057A SL-HD-AF-087B



SL-RF-AE-030A

Vacuum Aluminum Plating PC
真空镀铝

L:30.0mm W:30.0mm H:21.15mm



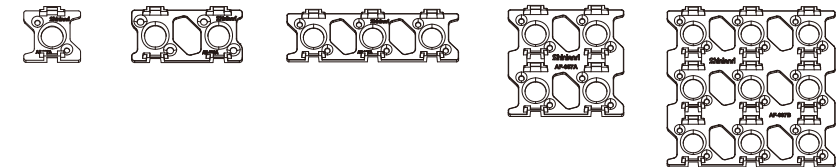
Code 型号	Typ.FWHM 标准角度	Typ.eff 标准效率
SL-RF-AE-030A-FF	Flood 40°	88%
SL-RF-AE-030A-FW	Flood 60°	88%
SL-RF-AE-030A-RWW	Square 55° * 55°	85%
SL-RF-AE-030A-RFL	Rectangular 40° * 65°	85%

SL-RF-AE-030A-FF SL-RF-AE-030A-FW SL-RF-AE-030A-RWW SL-RF-AE-030A-RFL



XP-G2/3
XP-E2
SST-20-WTH
Oslon

SL-HD-AF-027A SL-HD-AF-053A SL-HD-AF-087A SL-HD-AF-057A SL-HD-AF-087B



SL-RF-AE-030A

Vacuum Aluminum Plating PC
真空镀铝

L:30.0mm W:30.0mm H:21.15mm



Wallwasher

SL-RF-AE-150A

Vacuum Aluminum Plating PC
真空镀铝

L:150.0mm W:30.0mm H:21.15mm



Code 型号	Typ.FWHM 标准角度	Typ.eff 标准效率
SL-RF-AE-030A-WW	Wallwasher	70%



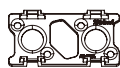
SL-RF-AE-030A-WW



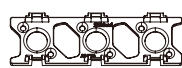
SL-HD-AF-027A



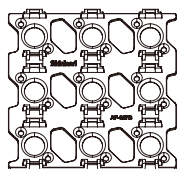
SL-HD-AF-053A



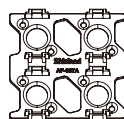
SL-HD-AF-087A



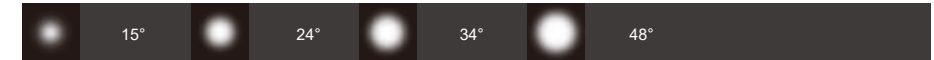
SL-HD-AF-087B



SL-HD-AF-057A



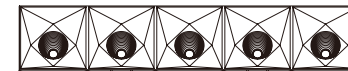
XP-G2/3
XP-E2
SST-20-WTH
Oslon



Code 型号	Typ.FWHM 标准角度	Typ.eff 标准效率
SL-RF-AE-150A-S	15°	88%
SL-RF-AE-150A-M	24°	88%
SL-RF-AE-150A-F	34°	88%
SL-RF-AE-150A-W	48°	88%



SL-RF-AE-150A-S



SL-RF-AE-150A-M



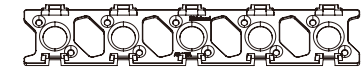
SL-RF-AE-150A-F



SL-RF-AE-150A-W



SL-HD-AF-147A

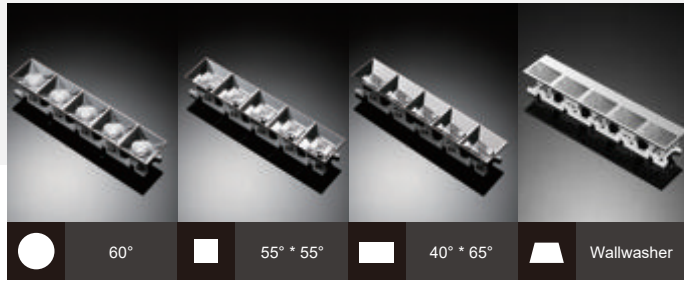


XP-G2/3
XP-E2
SST-20-WTH
Oslon

SL-RF-AE-150A

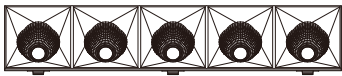
Vacuum Aluminum Plating PC
真空镀铝

L:150.0mm W:30.0mm H:21.15mm

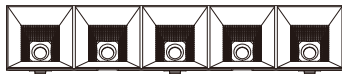


Code 型号	Typ.FWHM 标准角度	Typ.eff 标准效率
SL-RF-AE-150A-FW	Flood 60°	88%
SL-RF-AE-150A-RWW	Square 55° * 55°	85%
SL-RF-AE-150A-RFL	Rectangular 40° * 65°	85%
SL-RF-AE-150A-WW	Wallwasher	70%

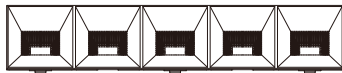
SL-RF-AE-150A-FW



SL-RF-AE-150A-RWW



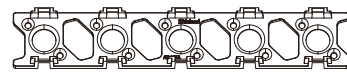
SL-RF-AE-150A-RFL



SL-RF-AE-150A-WW



SL-HD-AF-147A



XP-G2/3
XP-E2
SST-20-WTH
Oslon

SL-RF-AE-187A

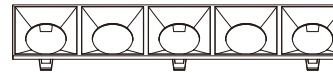
Vacuum Aluminum Plating PC
真空镀铝

L:190.0mm W:38.0mm H:26.0mm

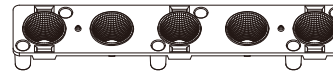


Code 型号	Typ.FWHM 标准角度	Typ.eff 标准效率
SL-RF-AE-187A-M	21°-24°	72%
SL-RF-AE-187A-F	33°-36°	72%

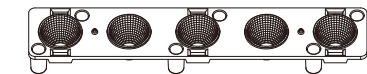
SL-RF-AI-190A



SL-RF-AE-187A-M



SL-RF-AE-187A-F



SL-PL-AK-169A-X

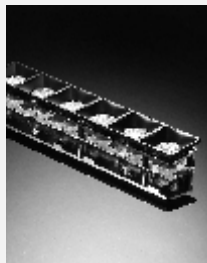


5050 Package
S8

SL-RF-AE-225A

Vacuum Aluminum Plating PC
真空镀铝

L:228mm W: 38mm H:26mm

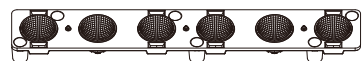


Code 型号	Typ.FWHM 标准角度	Typ.eff 标准效率
SL-RF-AE-225A-F	33°-39°	86%

SL-RF-AI-228A



SL-RF-AE-225A-F



SL-PL-AK-224A



5050 Package

S8

7070 Package

S10

SL-PL-AM
FRONT FOCAL LENS

SL-PL-AM
FRONT FOCAL LENS II

VI

小开孔
出大光斑

Small Hole with
Large Light Pattern



VI

EACH RAY IS BRIGHTER IN SHINLAND
www.shinland.com.cn

SL-PL-AM FRONT FOCAL LENS
黑洞一代

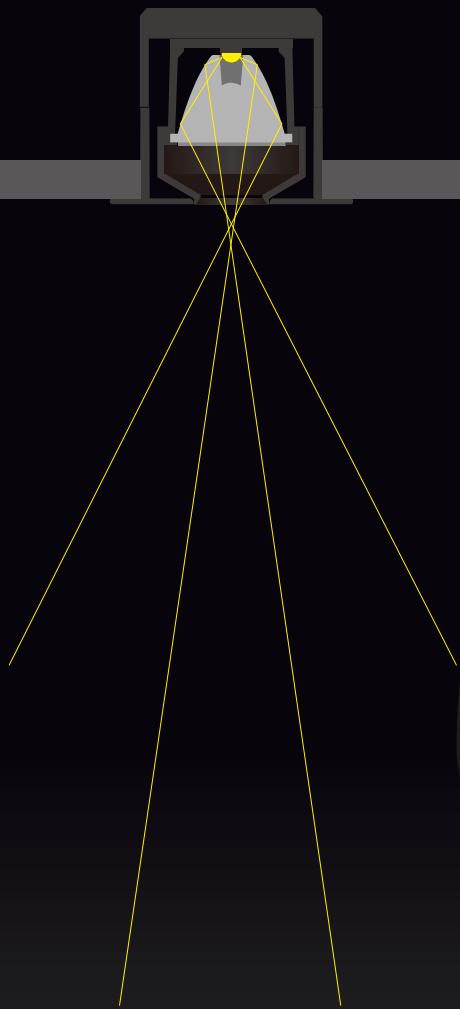
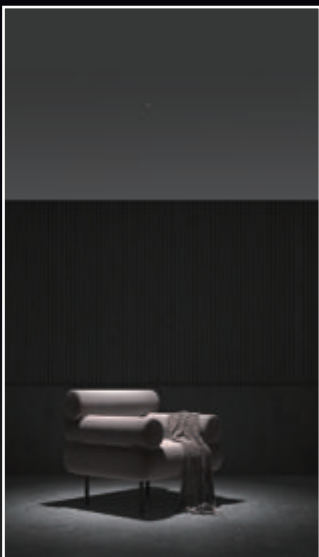


深焦距 防眩设计

Deep Focal Length Anti-Glare Trim Design

见光不见灯的最 佳解决方案

Best Solution to see Light from NoWhere



SL-PL-AM-020A

Φ:20.0mm H:15.0mm Φ:4.0mm

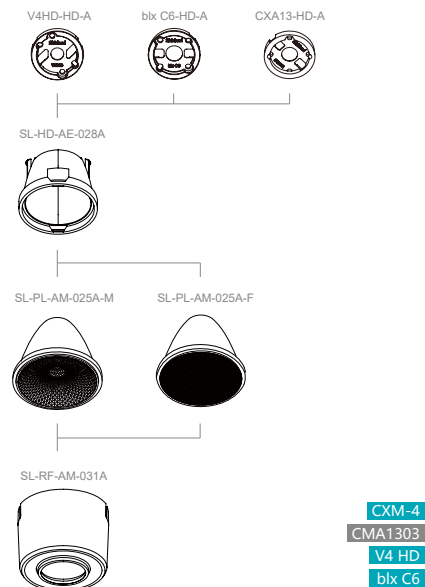
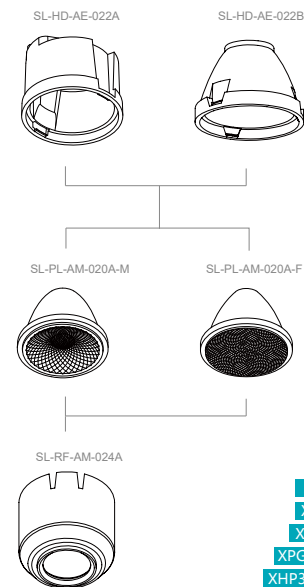
Code 型号	Typ.FWHM 标准角度	Typ.eff 标准效率	module.eff 成套效率
SL-PL-AM-020A-M	22°	90%	50%
SL-PL-AM-020A-F	36°	90%	58%



SL-PL-AM-025A

Φ:25.0mm H:20.0mm Φ:7.0mm

Code 型号	Typ.FWHM 标准角度	Typ.eff 标准效率	module.eff 成套效率
SL-PL-AM-025A-M	24°	87%	48%
SL-PL-AM-025A-F	36°	87%	55%





SL-PL-AM-032A

Φ:32.0mm H:24.0mm Φ:9.0mm



Code 型号	Typ.FWHM 标准角度	Typ.eff 标准效率	module.eff 成套效率
SL-PL-AM-032A-M	24°	86%	50%
SL-PL-AM-032A-F	36°	86%	65%



CXM-6-HD-A CXA13-HD-A G4-10-HD-A V4HD-HD-A blx C6-HD-A



SL-HD-AE-035A



SL-PL-AM-032A-M



SL-PL-AM-032A-F



SL-RF-AM-038A



- CXM-4
- CXM-6
- CMA1303
- CXA13
- V4HD
- V6HD
- blx C6



SL-PL-AM-042A

Φ:45.0mm H:35.0mm Φ:9.8mm



Code 型号	Typ.FWHM 标准角度	Typ.eff 标准效率	module.eff 成套效率
SL-PL-AM-042A-M	24°	83%	45%
SL-PL-AM-042A-F	36°	83%	60%



SL-HD-AC-09A



SL-HD-AE-045A



SL-PL-AM-042A-M



SL-PL-AM-042A-F



SL-RF-AM-048A

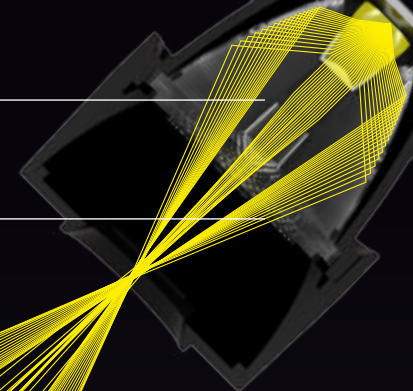


- CLU701
- CXM-6
- V6 HD

SL-PL-AM FRONT FOCAL LENS II 黑洞II代

交叉出光 效率高 (70%)

Cross Lighting Design, High Efficiency (70%)



高灯具前罩 (低眩光)
High Luminaire Front Cover
(Lower Glare)



矮灯具前罩 (高效率)
Low Luminaire Front Cover
(Higher Efficiency)



防眩罩倒拔模设计,
内壁亮面设计
降低眩光

Anti Glare Trim with Reverse
Draft Design, Lower Glare by
Glossy Inside



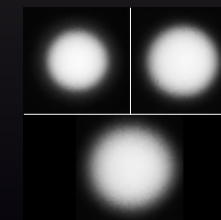
独特的菱形单元
费马螺旋外观

Unique Diamond-Shaped
Fermat Spiral Appearance



小中大可分光斑

Clear of Different Size Light
Pattern





NEW

SL-PL-AM-020B

Φ:20.0mm H: 14.9mm Φ:4.7mm

Code 型号	Typ.FWHM 标准角度	module.eff High/Low Anti-Glare Trim 成套效率 (高/矮防眩罩)
SL-PL-AM-020B-M	24°	46% / 52%
SL-PL-AM-020B-F	36°	63% / 72%
SL-PL-AM-020B-W	45	55% / 68%

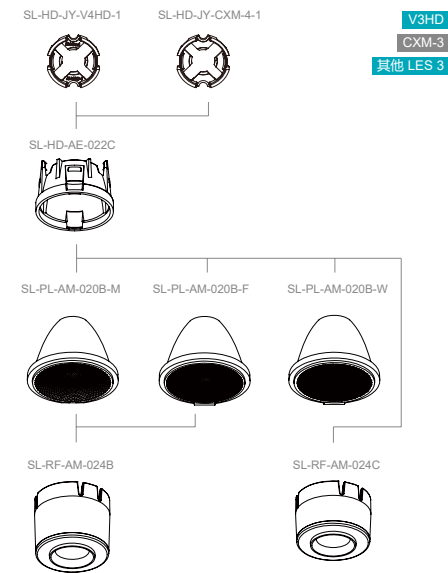


NEW

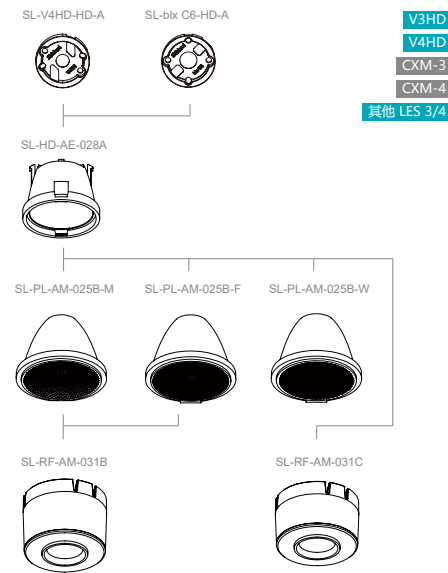
SL-PL-AM-025B

Φ:25.0mm H:20.4mm Φ:6.8mm

Code 型号	Typ.FWHM 标准角度	module.eff High/Low Anti-Glare Trim 成套效率 (高/矮防眩罩)
SL-PL-AM-025B-M	24°	52% / 60%
SL-PL-AM-025B-F	36°	63% / 68%
SL-PL-AM-025B-W	45	52% / 64%



■ 匹配光源 MATCHED LED	V3HD	CXM-3	其他LES 3
■ 支架型号 HOLDER	SL-HD-JY-V4HD-1	SL-HD-JY-CXM-4-1	/



■ 匹配光源 MATCHED LED	V3HD V4HD	CXM-3 CXM-4	其他LES 3/4
■ 支架型号 HOLDER	SL-V4HD-HD-A	SL-blx C6-HD-A	/

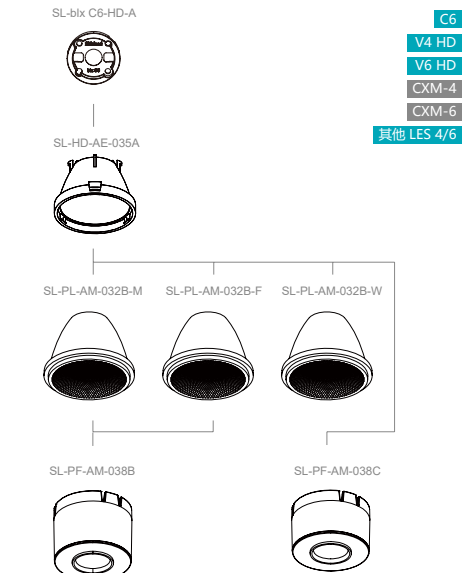


NEW

SL-PL-AM-032B

Φ:32.0mm H:24.0mm Φ:10.0mm

Code 型号	Typ.FWHM 标准角度	module.eff High/Low Anti-Glare Trim 成套效率 (高/矮防眩罩)
SL-PL-AM-032B-M	24°	47% / 50%
SL-PL-AM-032B-F	36°	57% / 64%
SL-PL-AM-032B-W	45	56% / 65%



■ 匹配光源 MATCHED LED	C6 V4 HD V6 HD CXM-4 CXM-6	其他LES 4/6
■ 支架型号 HOLDER	SL-blx C6-HD-A	/

EXCHANGEABLE DESIGN

VII

反光杯与透镜
任意切换

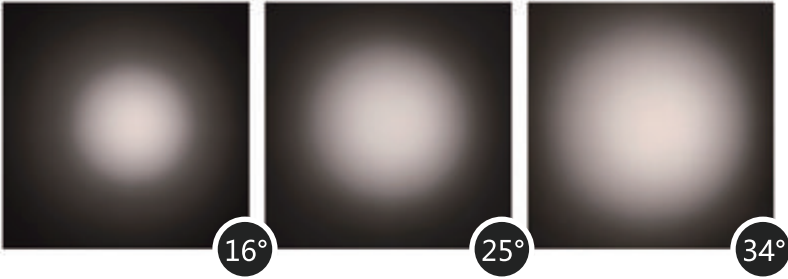
Exchangeable Between
Reflector and Lens



UGR < 9

光斑饱满，角度区分度高

Perfect Light Pattern
High Definition in Angle



SL-RF-AO-048A

Φ:47.5mm H:24.8mm Φ:14.4mm

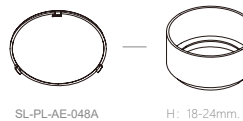
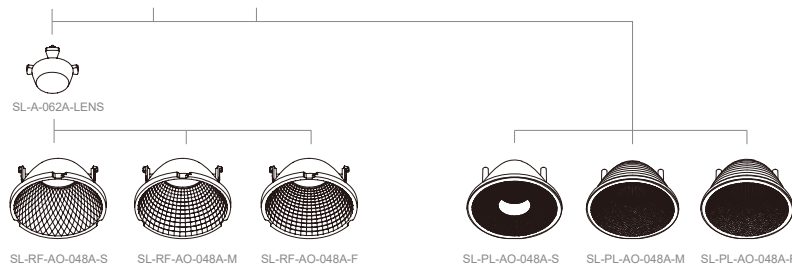


SL-PL-AO-048A

Φ:47.5mm H:24.8mm Φ:15.0mm

Code 型号	Typ.FWHM 标准角度	Typ.eff 标准效率
SL-RF-AO-048A-S	14°-18°	82%
SL-RF-AO-048A-M	20°-25°	82%
SL-RF-AO-048A-F	37°-42°	82%

Code 型号	Typ.FWHM 标准角度	Typ.eff 标准效率
SL-PL-AO-048A-S	14°-19°	88%
SL-PL-AO-048A-M	22°-27°	89%
SL-PL-AO-048A-F	33°-39°	89%



SL-PL-AE-048A

H: 18-24mm, 防眩罩自行设计
此光学搭配防眩罩结构方可达到最佳效果

Vacuum
Aluminum
Plating
PC
真空镀铝

支架型号: HD-09A	HD-AD-09A	SL-HD-AD-11C	SL-HD-AD-12C
LED光源: V6 HD	V6 HD/CXM-6/CLU028	CXA15	CLU028/CXM-6

- CLU071
- CLU028
- CXM-6
- CXM-9
- V6 HD
- CXA 15



SL-RF-AO-062A

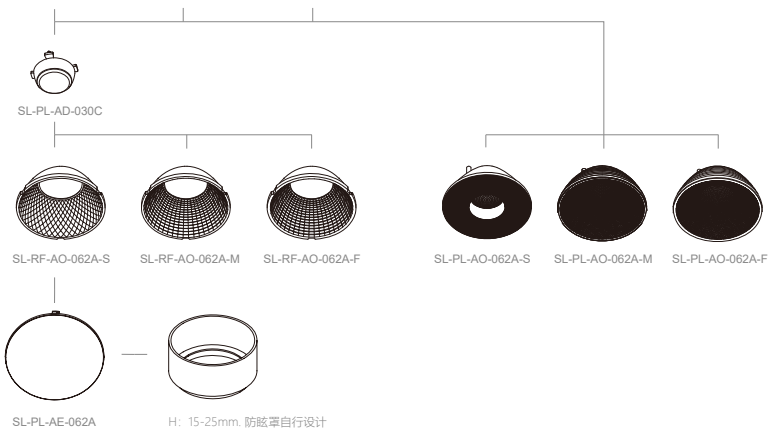
Φ:62.0mm H:28.0mm Φ:30.0mm

SL-PL-AO-062A

Φ:62.0mm H:28.0mm Φ:28.0mm

Code 型号	Typ.FWHM 标准角度	Typ.eff 标准效率
SL-RF-AO-062A-S	11°-20°	84%
SL-RF-AO-062A-M	22°-26°	84%
SL-RF-AO-062A-F	28°-36°	84%

Code 型号	Typ.FWHM 标准角度	Typ.eff 标准效率
SL-PL-AO-062A-S	11°-20°	88%
SL-PL-AO-062A-M	20°-27°	88%
SL-PL-AO-062A-F	30°-34°	88%



SL-PL-AE-062A
H: 15-25mm. 防眩罩自行设计
此光学搭配防眩罩结构方可达到最佳效果

Vacuum
Aluminum
Plating
PC
真空镀铝

光源类型	交联型号
CLU028	SL-HD-AD-11A
CXA15	SL-HD-AD-11A
CXM-9	SL-HD-AD-11B
CLU028	SL-HD-AD-12A

CLU028
CXA15
CXM-9



SL-RF-AO-072A

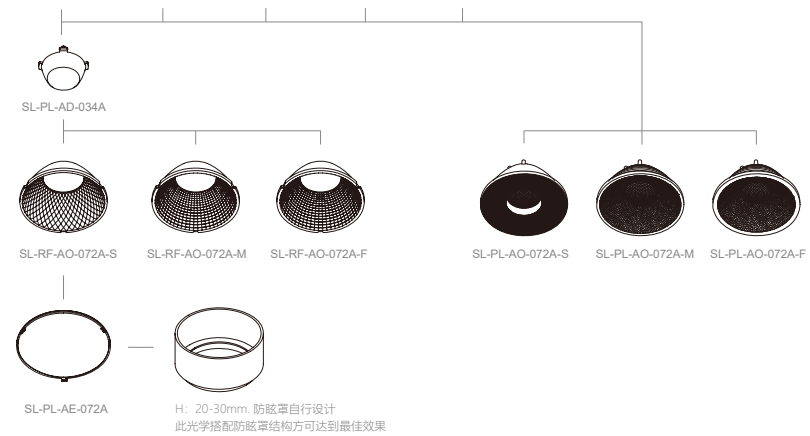
Φ:72.0mm H:32.0mm Φ:22.0mm

SL-PL-AO-072A

Φ:72.0mm H:32.0mm Φ:27.5mm

Code 型号	Typ.FWHM 标准角度	Typ.eff 标准效率
SL-RF-AO-072A-S	11°-20°	80%
SL-RF-AO-072A-M	22°-26°	80%
SL-RF-AO-072A-F	28°-36°	80%

Code 型号	Typ.FWHM 标准角度	Typ.eff 标准效率
SL-PL-AO-072A-S	11°-20°	86%
SL-PL-AO-072A-M	20°-27°	86%
SL-PL-AO-072A-F	30°-34°	90%



SL-PL-AE-072A
H: 20-30mm. 防眩罩自行设计
此光学搭配防眩罩结构方可达到最佳效果

Vacuum
Aluminum
Plating
PC
真空镀铝

光源类型	交联型号
CLU028	SL-HD-AD-11A
CXA15/CXB15	SL-HD-AD-11A
CXM-9	SL-HD-AD-11B
CLU028	SL-HD-AD-12A
CXA18	SL-HD-AD-14A
CLU038	SL-HD-AD-17A
1208	SL-HD-AD-18A

CLU028
CLU038
CXA15
CXB15
CXA18
CXM-9
1208

SL-RF-AQ
MAGNETIC LINEAR REFLECTOR



搭配A.A.G. Stucchi的磁轨

Compatible with A.A.G. Stucchi
Magnetic Linear Reflector

双色温方案

Tunable Color Temperature
Solutions



UGR<16

SL-RF-AQ-137A

Vacuum Aluminum Plating PC
真空镀铝

L:140.0mm W:22.3mm H:11.1mm



Code 型号	Typ.FWHM 标准角度	Typ.eff 标准效率
SL-RF-AQ-137A-RWW	63°*63°	70%



SL-RF-AI-140A



SL-RF-AQ-137A-RWW



SL-PL-AK-128A-X

2835 Package:
DURIS E 2835
3030 Package:
DURIS S5



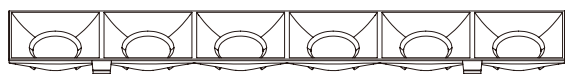
SL-RF-AQ-137B

Vacuum Aluminum Plating PC
真空镀铝

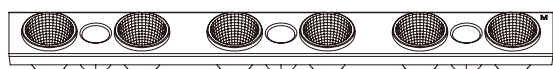
L:140.0mm W:18.9mm H:17.2mm



Code 型号	Typ.FWHM 标准角度	Typ.eff 标准效率
SL-RF-AQ-137B-M	26°	65%
SL-RF-AQ-137B-F	36°	66%
SL-RF-AQ-137B-W	47°	67%



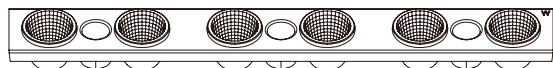
SL-RF-AI-140B



SL-RF-AQ-137B-M



SL-RF-AQ-137B-F



SL-RF-AQ-137B-W



SL-PL-AK-128A-X

2835 Package:
DURIS E 2835
3030 Package:
DURIS S5

SL-PL-AG TIR

SL-PL-DG

SL-PL-JY

IX



酒店透镜

打造五星级质感光斑

Hotel Lens
Create a Five-Star Quality Light Pattern



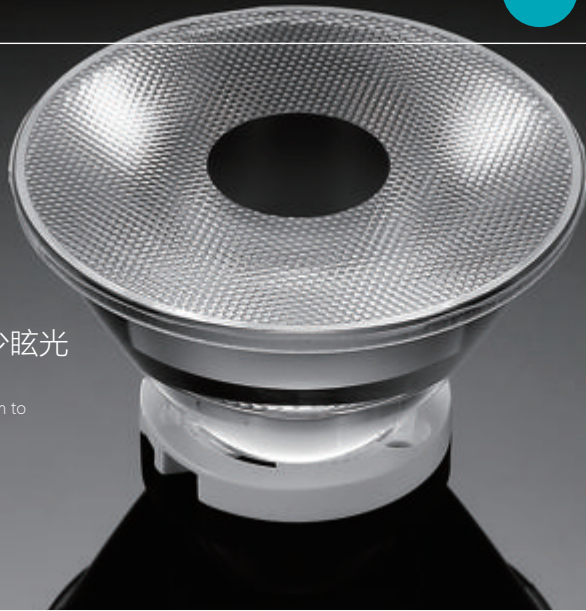
SL-PL-AG TIR

IX

超强控光能力
可搭配多种防眩罩减少眩光

Strong in Light Control
Can Match with Different Anti Glare Trim to
Reduce Glare Rays

Optical Transparent PC
光学级透明PC



SL-PL-AG-020A

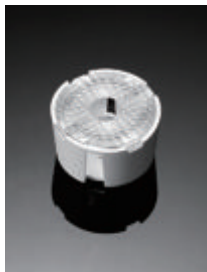
Φ:20.0mm H:15.0mm Φ:4.0mm

Code 型号	Typ.FWHM 标准角度	Typ.eff 标准效率
SL-PL-AG-020A-S	15°	90%
SL-PL-AG-020A-M	24°	90%

XP-E
XP-G
XP-E2
XP-G2/3
XHP35-HI

HOLDER

SL-HD-AE-022A
SL-HD-AE-022B



SL-PL-AG-022A

Φ:22.0mm H:11.77mm Φ:6.8mm

Code 型号	Typ.FWHM 标准角度	Typ.eff 标准效率
SL-PL-AG-022A-S	24°	82%

CLQ6A

HOLDER

SL-HD-AE-024B



SL-PL-AG-028A

Φ:28.0mm H:15.0mm Φ:8.2mm

Code 型号	Typ.FWHM 标准角度	Typ.eff 标准效率
SL-PL-AG-028A-S	19°	88%
SL-PL-AG-028A-M	24°	88%
SL-PL-AG-028A-F	37°	88%

CLU701
CLU080
CXM-6
CXM-7
CHM-6
CXA13
V4 HD
V6 HD
blx C6



SL-PL-AG-035A

Φ:35.0mm H:18.5mm Φ:11.4mm

Code 型号	Typ.FWHM 标准角度	Typ.eff 标准效率
SL-PL-AG-035A-S	18°	85%
SL-PL-AG-035A-M	24°	88%
SL-PL-AG-035A-F	34°	88%

CLU028
CLU701
CLU080
CXM-6
CXM-7
CHM-6
CXA13
CXB13
CXA15
CXB15
E6
E8
blx C6
blx C8



SL-PL-AG-045A

Φ:45.0mm H:25.3mm Φ:11.4mm

Code 型号	Typ.FWHM 标准角度	Typ.eff 标准效率
SL-PL-AG-045A-S	18°	82%
SL-PL-AG-045A-M	24°	82%
SL-PL-AG-045A-F	36°	82%

CLU028
CHM-9
CXM-9
CXA15
V10 Gen6
V10 Gen7
blx C8
1202/1203
Soleriq S9
NFCWL036B
NFCCLL036N



SL-PL-AG-075A

Φ:75.0mm H:33.0mm Φ:30.0mm

Optical Transparent PMMA
光学级透明PMMA

Code 型号	Typ.FWHM 标准角度	Typ.eff 标准效率
SL-PL-AG-075A-S	15°	77%
SL-PL-AG-075A-M	24°	92%

HOLDERS	COB
SL-HD-AD-11A	CXA15
SL-HD-AD-11B	CXM-9
SL-HD-AD-12A	CLU028 V10 Gen7/8
SL-HD-AD-14A	CXA18
SL-HD-AD-16A	CXM-14 V13 Gen7/8
SL-HD-AD-17A	CLU038

Optical Transparent PMMA
光学级透明PMMA

0.4mm

超窄边
Ultra Thin Trim

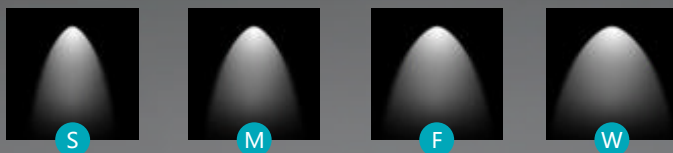
硬光斑设计

高效率、低眩光、无杂光
Hard Light Pattern
High Efficiency, Low Glare, No Stray Light

费马螺旋微结构
表面无需晒纹可达到均匀混光混色

High-precision Fermat Spiral Microstructure
the Surface can Achieve Uniform Light and
Color Mixing without Frosted Surface

小山丘洗墙方案
Wall Washer Solution



SL-PL-DG-028A

Φ:28mm H:14.55mm Φ:9mm

Code 型号	Typ.FWHM 标准角度	Typ.eff 标准效率
SL-PL-DG-028A-S	16°(LES 3)	88%
SL-PL-DG-028A-M	24°	86%
SL-PL-DG-028A-F	36°	86%
SL-PL-DG-028A-W	50°	86%



SL-HD-AA-09B



SL-HD-JD-028C



SL-PL-DG-028A-S SL-PL-DG-028A-M SL-PL-DG-028A-F SL-PL-DG-028A-W



SL-RF-AF-050E-RA +
SL-RF-AF-050F-RD +
SL-RF-AF-050B-RD
SL-RF-AF-050C-RW



SL-PL-DG-035A

Φ:35.0mm H:17.32mm Φ:12.5mm

Code 型号	Typ.FWHM 标准角度	Typ.eff 标准效率
SL-PL-DG-035A-S	16°(LES 4)	87%
SL-PL-DG-035A-M	24°	88%
SL-PL-DG-035A-F	36°	88%
SL-PL-DG-035B-W	50°	86%



SL-HD-AA-09A



SL-HD-JD-035C



SL-PL-DG-035A-S SL-PL-DG-035A-M SL-PL-DG-035A-F SL-PL-DG-035B-W



SL-RF-AF-070E-RA +
SL-RF-AF-070F-RD +
SL-RF-AF-070B-RD
SL-RF-AF-070B-RW



SL-PL-DG-045A

Φ:45.0mm H:20.8mm Φ:17.0mm



SL-PL-DG-050A

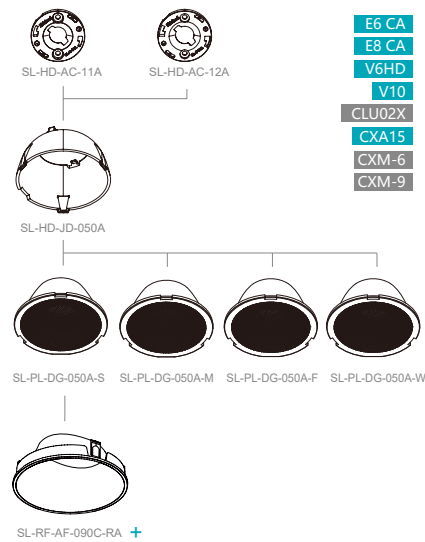
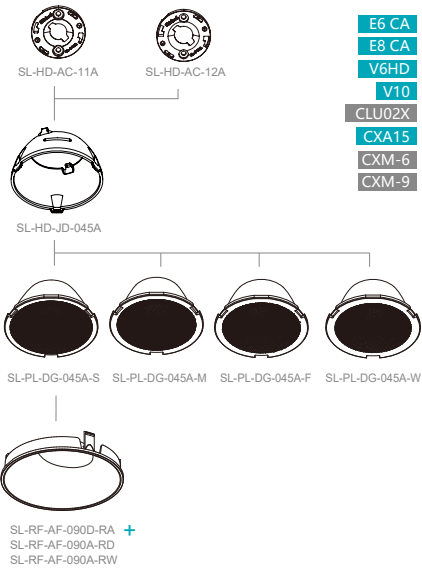
Φ:50.0mm H:23.3mm Φ:18.0mm



Code 型号	Typ.FWHM 标准角度	Typ.eff 标准效率
SL-PL-DG-045A-S	16°(LES 6)	86%
SL-PL-DG-045A-M	24°	83%
SL-PL-DG-045A-F	36°	85%
SL-PL-DG-045A-W	50°	82%



Code 型号	Typ.FWHM 标准角度	Typ.eff 标准效率
SL-PL-DG-050A-S	16°(LES 6)	80%
SL-PL-DG-050A-M	24°	81%
SL-PL-DG-050A-F	36°	86%
SL-PL-DG-050A-W	50°	86%



Optical Transparent PC
光学级透明PC

0.4mm

超窄边
Ultra Thin Trim

泰森多边形和
费马螺旋微结构结合
Combination of Tyson Polygon and
Fermat Spiral Microstructures

旋扣式透镜支架
Twist Lock Lens Holder

旋扣光源支架
Twist Lock COB Holder

柔光斑设计

双色温超强混光解决方案

Smooth Light Pattern
Ultra-Strong Color Mixing Lighting Solution



SL-PL-JY-028A

Φ:28.0mm H:13.7mm Φ:8.0mm



Code 型号	Typ.FWHM 标准角度	Typ.eff 标准效率
SL-PL-JY-028A-S	16°(LES 3)	89%
SL-PL-JY-028A-M	24°	83%
SL-PL-JY-028A-F	36°	82%
SL-PL-JY-028A-W	50°	82%

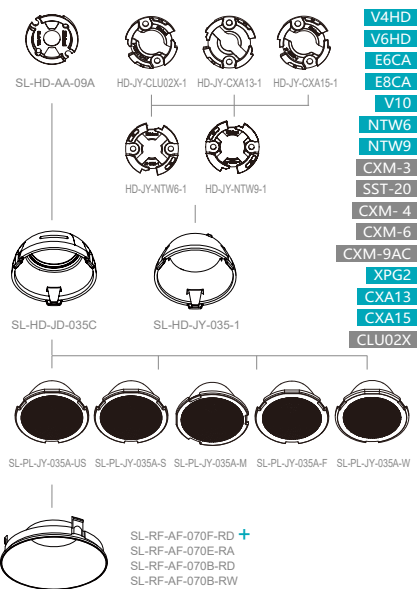


SL-PL-JY-035A

Φ:35.0mm H:17.05mm Φ:13.65mm



Code 型号	Typ.FWHM 标准角度	Typ.eff 标准效率
SL-PL-JY-035A-US (配ES3)	11°	85%
SL-PL-JY-035A-S	15°	85%
SL-PL-JY-035A-M	24°	85%
SL-PL-JY-035A-F	36°	82%
SL-PL-JY-035A-W	50°	83%

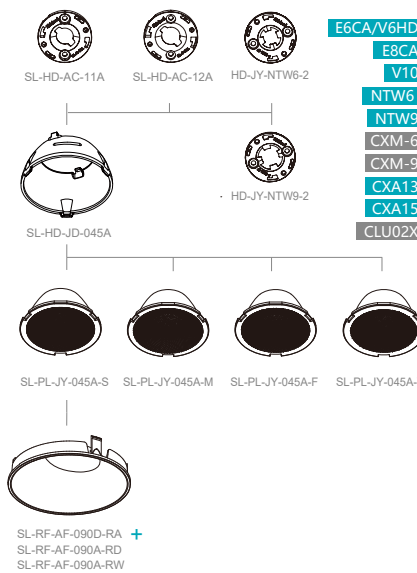


SL-PL-JY-045A

Φ:45.00mm H:20.80mm Φ:17.20mm



Code 型号	Typ.FWHM 标准角度	Typ.eff 标准效率
SL-PL-JY-045A-S	15°	85%
SL-PL-JY-045A-M	24°	83%
SL-PL-JY-045A-F	36°	82%
SL-PL-JY-045A-W	50°	82%

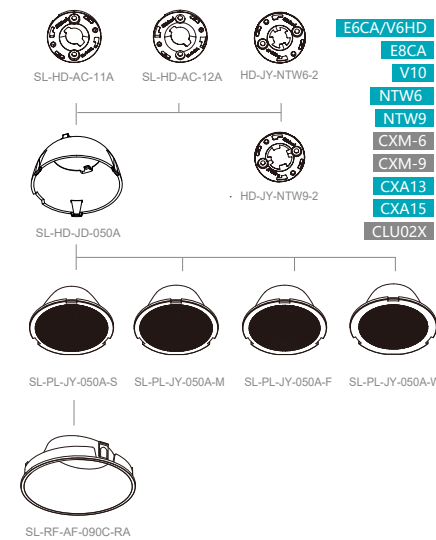


SL-PL-JY-050A

Φ:50.00mm H:23.30mm Φ:19.60mm



Code 型号	Typ.FWHM 标准角度	Typ.eff 标准效率
SL-PL-JY-050A-S	15°	84%
SL-PL-JY-050A-M	24°	83%
SL-PL-JY-050A-F	36°	82%
SL-PL-JY-050A-W	50°	80%



SL-PL-QJ LENS
全角透镜

UGR < 6

高K值
High Central Intensity

高光效
High Efficiency

低眩光
Low Glare

无杂光
No Stray Light



以全角定义光斑大小
光斑小中大分明

Defining light pattern in FWTM, Easy to distinguish different beam angle



SL-PL-QJ-022A

Φ:22.0mm H:10.8mm Φ:9.5mm

Code 型号	Typ.FWHM 标准角度	Typ.eff 标准效率
SL-PL-QJ-022A-S	15°(Les3)	78%
SL-PL-QJ-022A-M	24°	86%
SL-PL-QJ-022A-F	36°	86%
SL-PL-QJ-022A-W	50°	82%



SL-HD-CXM-4-1 SL-HD-V4HD-1



SL-HD-JY-022-1



SL-PL-QJ-022A-S SL-PL-QJ-022A-M SL-PL-QJ-022A-F SL-PL-QJ-022A-W



SL-RF-AF-030A-RD

■ 匹配光源 MATCHED LED	CXM-3 CXM-4	V3 HD V4 HD	其他LES 3/4
■ 支架型号 HOLDER	SL-HD-CXM-4-1	SL-HD-V4HD-1	/



SL-PL-QJ-025A

Φ:25.00mm H:12.35mm Φ:11.6mm

Code 型号	Typ.FWHM 标准角度	Typ.eff 标准效率
SL-PL-QJ-025A-S	15°(Les3)	75%
SL-PL-QJ-025A-M	24°	86%
SL-PL-QJ-025A-F	36°	86%
SL-PL-QJ-025A-W	50°	84%



SL-HD-CXM-4-1 SL-HD-V4HD-1



SL-HD-JY-025-1



SL-PL-QJ-025A-S SL-PL-QJ-025A-M SL-PL-QJ-025A-F SL-PL-QJ-025A-W



SL-RF-AF-040A-RD

■ 匹配光源 MATCHED LED	CXM-4	V4 HD	其他LES 4
■ 支架型号 HOLDER	SL-HD-CXM-4-1	SL-HD-V4HD-1	/



NEW

SL-PL-QJ-028A

Φ:28.00mm H:13.7mm Φ:7.9mm

Code 型号	Typ.FWHM 标准角度	Typ.eff 标准效率
SL-PL-QJ-028A-S	15°	88%
SL-PL-QJ-028A-M	24°	88%
SL-PL-QJ-028A-F	36°	88%



NEW

SL-PL-QJ-035A

Φ:35.00mm H:16.85mm Φ:15.75mm

Code 型号	Typ.FWHM 标准角度	Typ.eff 标准效率
SL-PL-QJ-035A-US	11°(Les3)	79%
SL-PL-QJ-035A-S	15°(Les4)	83%
SL-PL-QJ-035A-M	24°	86%
SL-PL-QJ-035A-F	36°	86%



NEW

SL-PL-QJ-040A

Φ:40.0mm H:19.10mm Φ:17.05mm

Code 型号	Typ.FWHM 标准角度	Typ.eff 标准效率
SL-PL-QJ-040A-US	12°(Les4)	79%
SL-PL-QJ-040A-S	18°(Les6)	85%
SL-PL-QJ-040A-M	24°	85%
SL-PL-QJ-040A-F	36°	84%
SL-PL-QJ-040A-W	50°	80%

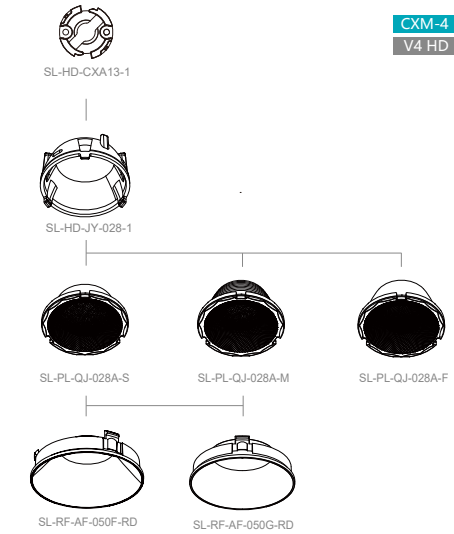


NEW

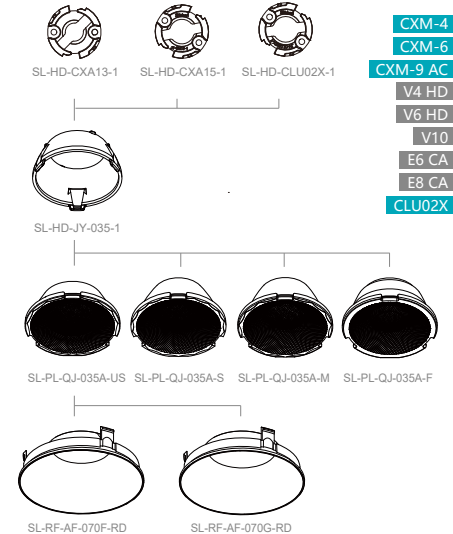
SL-PL-QJ-045A

Φ:45.0mm H:20.9mm Φ:19.8mm

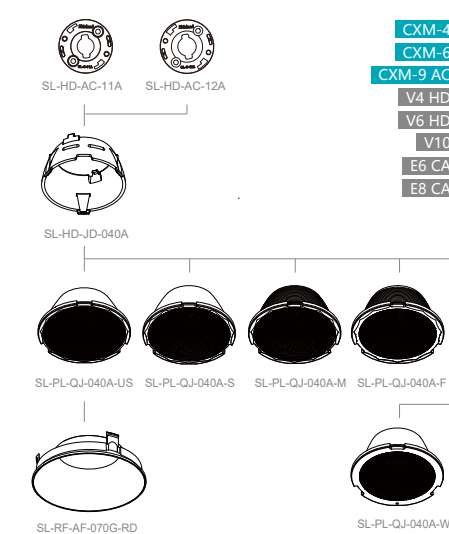
Code 型号	Typ.FWHM 标准角度	Typ.eff 标准效率
SL-PL-QJ-045A-US	11°(Les4)/15°(Les 6)	76%
SL-PL-QJ-045A-M	24°	85%
SL-PL-QJ-045A-F	36°	86%



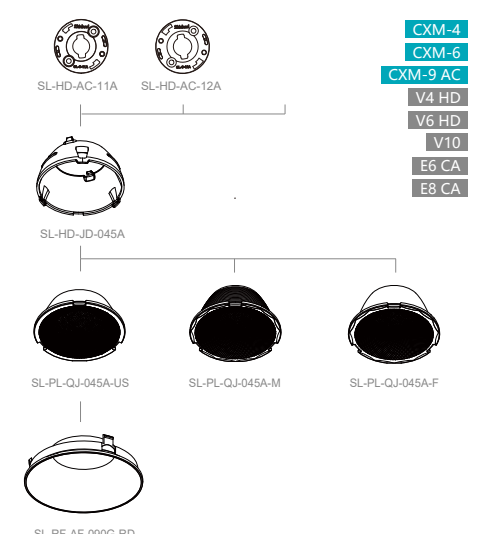
■ 匹配光源 MATCHED LED	CXM-4 V4 HD	其他LES 3/4
■ 支架型号 HOLDER	SL-HD-CXA13-1	/



■ 匹配光源 MATCHED LED	CXM-4 V4 HD	CXM-6 V6 HD	E6 CA	E8 CA	CXM-9 AC CLU02X	V10	其他LES 4/6/9
■ 支架型号 HOLDER	SL-HD-CXA13-1	SL-HD- CXA15-1	SL-HD- CLU02X-1	/			



■ 匹配光源 MATCHED LED	E8 CA	CXM-4 V4 HD	E6 CA	CXM-6 V6 HD	V10	CXM-9 AC	其他 LES 4/6/9
■ 支架型号 HOLDER	SL-HD-AC-11A	SL-HD-AC-12A	/				



■ 匹配光源 MATCHED LED	E8 CA	CXM-4 V4 HD	E6 CA	CXM-6 V6 HD	V10	CXM-9 AC	其他 LES 4/6/9
■ 支架型号 HOLDER	SL-HD-AC-11A	SL-HD-AC-12A	/				



NEW

SL-PL-QJ-050A

Φ:50.0mm H:23.5mm Φ: 23.6mm

Code 型号	Typ.FWHM 标准角度	Typ.eff 标准效率
SL-PL-QJ-050A-US	11°(Les6)/15°(Les9)	80%
SL-PL-QJ-050A-M	24°	85%
SL-PL-QJ-050A-F	36°	86%

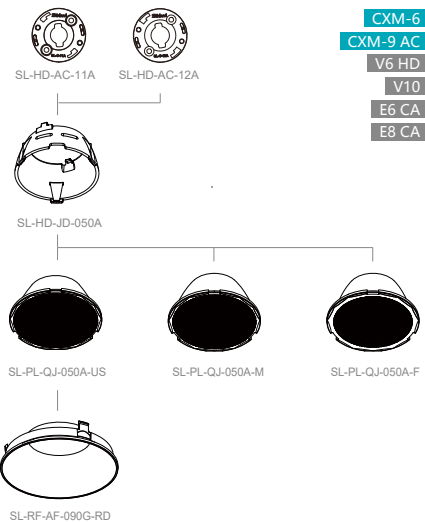


NEW

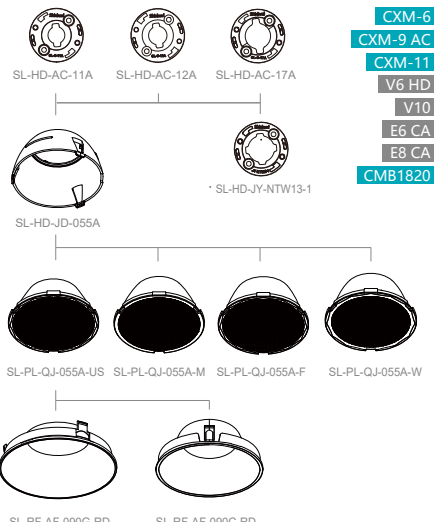
SL-PL-QJ-055A

Φ:55.0mm H: 26.25mm Φ: 24.6mm

Code 型号	Typ.FWHM 标准角度	Typ.eff 标准效率
SL-PL-QJ-055A-US	11°(Les6)/15°(Les9)	78%
SL-PL-QJ-055A-M	24°	84%
SL-PL-QJ-055A-F	36°	85%
SL-PL-QJ-055A-W	50°	83%



CXM-6
CXM-9 AC
V6 HD
V10
E6 CA
E8 CA



CXM-6
CXM-9 AC
CXM-11
V6 HD
V10
E6 CA
E8 CA
CMB1820

■ 匹配光源 MATCHED LED	E8 CA	E6 CA V6 HD	CXM-6 CXM-9 AC	其他 LES 6/9
■ 支架型号 HOLDER	SL-HD-AC-11A	SL-HD-AC-12A	/	/

■ 匹配光源 MATCHED LED	E8 CA	E6 CA V6 HD	CXM-6 CXM-9 AC	V10	CMB1820	CXM-11	其他 LES 6/9/11/14
■ 支架型号 HOLDER	SL-HD-AC-11A	SL-HD-AC-12A	SL-HD-AC-17A	SL-HD-JY-NTW13-1	/	/	/

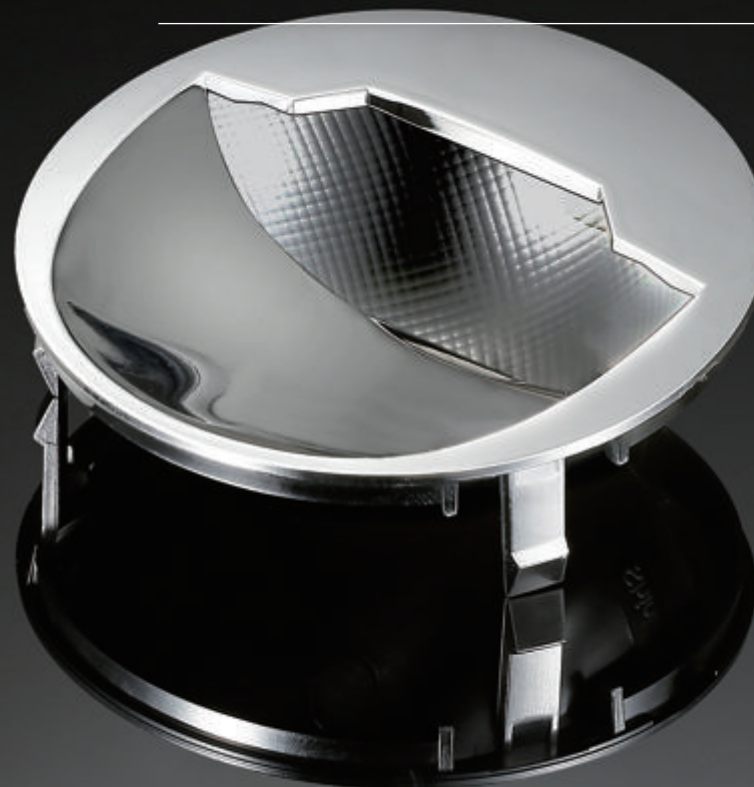
SL-RF-AP

X

幕光洗墙

Wallwasher

Optical Transparent PC
光学级透明PC



无眩光

特殊自由曲面反光杯
与防眩罩搭配

No glare: Special free-form surface
reflector matched anti-glare trim

超强混光性能

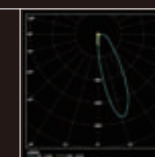
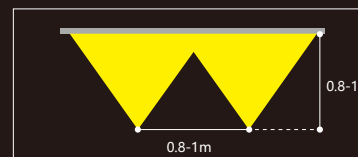
独特的微鳞甲格纹
单色和双色温通用方案

Good uniformity light pattern: unique
micro scale structure, suitable for
single & color tunable COB

无暗区洗墙光斑

洗墙起始光斑与
天花板顶端切齐

Wall washing without dark area: The
starting light pattern of wall washing
is aligned with the top of the ceiling



建议间距: 0.8-1m
Recommended distance: 0.8-1m

离墙: 0.8-1
Distance from wall: 0.8-1m

EACH RAY IS BRIGHTER IN SHINLAND
www.shinland.com.cn

SL-RF-AF-049A-RC

Vacuum Aluminum Plating PC
真空镀铝

Φ: 49.1mm



SL-RF-AF-069A-RC

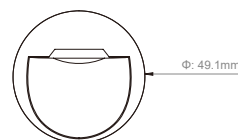
Vacuum Aluminum Plating PC
真空镀铝

Φ: 68.2mm



Code 型号	Product name 产品名称	Typ.FWHM 标准角度	Typ.eff 标准效率
SL-RF-AF-049A-RC	防眩罩/ Anti-glare Trim	/	/
SL-RF-AP-035A-WW	反光杯/ Reflector	WW	62%

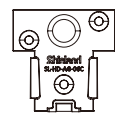
Code 型号	Product name 产品名称	Typ.FWHM 标准角度	Typ.eff 标准效率
SL-RF-AF-069A-RC	防眩罩/ Anti-glare Trim	/	/
SL-RF-AP-059A-WW	反光杯/ Reflector	WW	68%



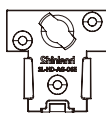
SL-RF-AF-049A-RC



SL-RF-AP-035A-WW



SL-HD-AG-06C



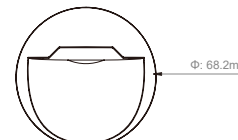
SL-HD-AG-06E



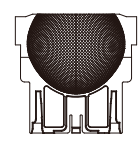
L201 月光银 L103 玛瑙黑 L003 白色素材

支架型号HOLDER	匹配光源 MATCHED LED
SL-HD-AG-06C	V4HD/V6HD/CXM-4/CXM-6/CLU701
SL-HD-AG-06E	东洋T10/欧朗特HTC/添鑫TX-13XX

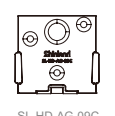
- V4HD
- V6HD
- CXM-4
- CXM-6
- CLU701



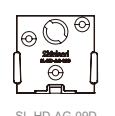
SL-RF-AF-069A-RC



SL-RF-AP-059A-WW



SL-HD-AG-09C



SL-HD-AG-09D



SL-HD-AG-09E



L201 月光银 L103 玛瑙黑 L003 白色素材

支架型号HOLDER	匹配光源 MATCHED LED
SL-HD-AG-09C	CXM-6/CLU701
SL-HD-AG-09D	V6HD
SL-HD-AG-09E	东洋T10/欧朗特HTC/添鑫TX-13XX

- V6HD
- CXM-6
- CLU701

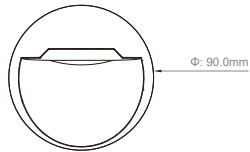
SL-RF-AF-090B-RC

Vacuum Aluminum Plating PC
真空镀铝

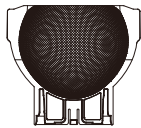
Φ: 90.0mm



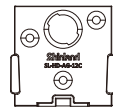
Code 型号	Product name 产品名称	Typ.FWHM 标准角度	Typ.eff 标准效率
SL-RF-AF-090B-RC	防眩罩/ Anti-glare Trim	/	/
SL-RF-AP-075A-WW	反光杯/ Reflector	WW	70%



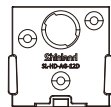
SL-RF-AF-090B-RC



SL-RF-AP-075A-WW



SL-HD-AG-12C



SL-HD-AG-12D

- V10
- CXM-9
- CXA15
- CXB15



L201 月光银 L103 玛瑙黑 L003 白色素材

支架型号HOLDER	匹配光源 MATCHED LED
SL-HD-AG-12C	V10/CXM-9
SL-HD-AG-12D	CXA15/CXB15

UGR < 3

SL-RF-XG Reflector
消光反光杯

一层光斑设计
超低眩光

One Layer Light Pattern,
Ultra Low Glare



AR镀膜
AR Coating



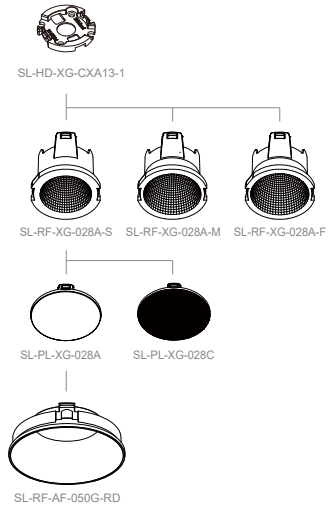
耐高温材料
High Temperature
Resistant Material



SL-RF-XG-028A-S

Φ:28.0mm H:22.4mm Φ:5.6mm(S)/7.8mm(M/F)

Code 型号	Typ.FWHM 标准角度	Typ.eff 标准效率
SL-RF-XG-028A-S	18° (LES4)	83%
SL-RF-XG-028A-M	24°	83%
SL-RF-XG-028A-F	36°	83%



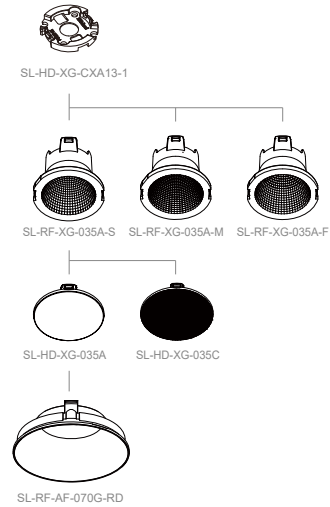
■ 匹配光源 MATCHED LED	V6HD E8CA	CXM-4 CXM-6	CLU703	TOYONIA10/TX-13	其他LES 4/6
■ 支架型号 HOLDER	SL-HD-XG-CXA13-1		/		



SL-RF-XG-035A

Φ:35.0mm H:28.0mm Φ:7.8mm

Code 型号	Typ.FWHM 标准角度	Typ.eff 标准效率
SL-RF-XG-035A-S	18°	83%
SL-RF-XG-035A-M	24°	83%
SL-RF-XG-035A-F	36°	83%



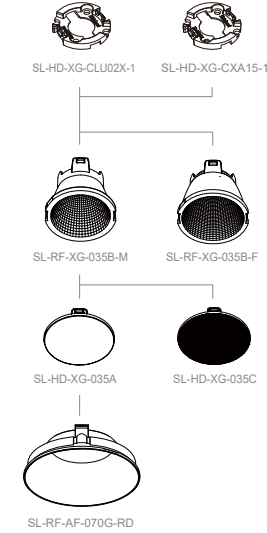
■ 匹配光源 MATCHED LED	V6HD E8CA	CXM-6	CLU703	TOYONIA10/TX-13	其他LES 6
■ 支架型号 HOLDER	SL-HD-XG-CXA13-1		/		



SL-RF-XG-035B

Φ:35.0mm H:28.0mm Φ:11.4mm

Code 型号	Typ.FWHM 标准角度	Typ.eff 标准效率
SL-RF-XG-035B-M	26°	81%
SL-RF-XG-035B-F	36°	86%



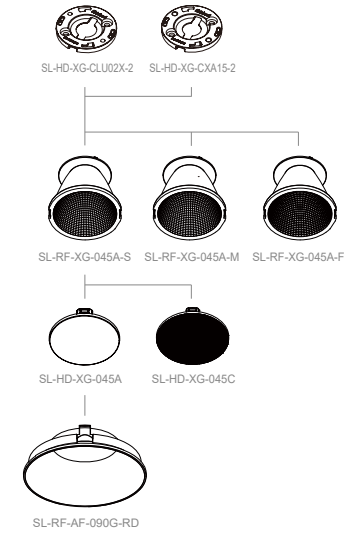
■ 匹配光源 MATCHED LED	V10 CLU02X	CXM-9 Gen4	E8CA	TOYONIA T20/TX-15	其他LES 9
■ 支架型号 HOLDER	SL-HD-XG-CLU02X-1	SL-HD-XG-CXA15-1	/		



SL-RF-XG-045A

Φ:45.0mm H: 36mm Φ:11.1mm

Code 型号	Typ.FWHM 标准角度	Typ.eff 标准效率
SL-RF-XG-045A-S	18°	83%
SL-RF-XG-045A-M	24°	85%
SL-RF-XG-045A-F	36°	85%



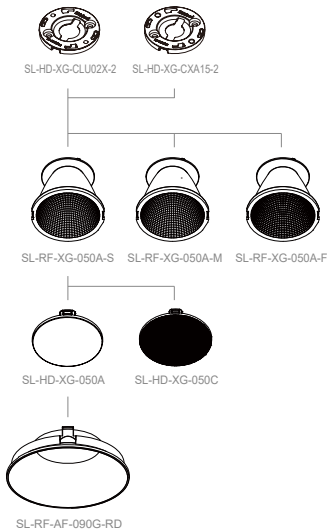
■ 匹配光源 MATCHED LED	V10 CLU02X	CXM-9 Gen4	E8CA	TOYONIA T20/TX-15	其他LES 9
■ 支架型号 HOLDER	SL-HD-XG-CLU02X-2	SL-HD-XG-CXA15-2	/		



SL-RF-XG-050A

Φ:50.0mm H: 40.0mm Φ:11.4mm

Code 型号	Typ.FWHM 标准角度	Typ.eff 标准效率
SL-RF-XG-050A-S	18°	84%
SL-RF-XG-050A-M	24°	84%
SL-RF-XG-050A-F	36°	84%

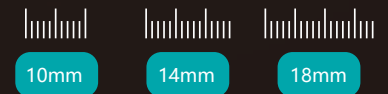


■ 匹配光源 MATCHED LED	V10 CLU02X	CXM-9 Gen4	E8CA TOYONIA T20/TX-15	其他LES 9
■ 支架型号 HOLDER	SL-HD-XG-CLU02X-2	SL-HD-XG-CXA15-2	/	

SL-MN-RF MINI REFLECTOR 迷你反光杯



小体积
Small Size



低眩光, 高亮度, 高耐温

Low glare, High illumination, High temperature resistance

Beam Angle
18°/24°/36°角度可选



NEW

SL-R-RF-MN-010A

Φ:10.0mm H: 7.5mm Φ:3.5mm

Code 型号	Typ.FWHM 标准角度	Typ.eff 标准效率
SL-R-RF-MN-010A-M	26°	92%
SL-R-RF-MN-010A-F	36°	95%



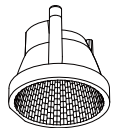
NEW

SL-R-RF-MN-014A

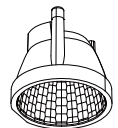
Φ:14.0mm H:10mm Φ:4.8mm

Code 型号	Typ.FWHM 标准角度	Typ.eff 标准效率
SL-R-RF-MN-014A-M	26°	88%
SL-R-RF-MN-014A-F	36°	87%

SST20



SL-R-RF-MN-010A-M



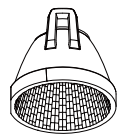
SL-R-RF-MN-010A-F

■ 匹配光源 MATCHED LED	3030/3535/2323
■ 光源型号 SMD	Luminus SST20

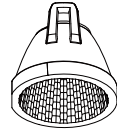
CLU7S3



SL-HD-MN-CLU7S3-1



SL-RF-MN-014A-S



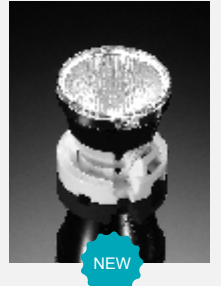
SL-RF-MN-014A-M

■ 匹配光源 MATCHED LED	CLU7S3	其他LES 3
■ 光源型号 SMD	SL-HD-MN-CLU7S3-1	

SL-RF-MN-18A

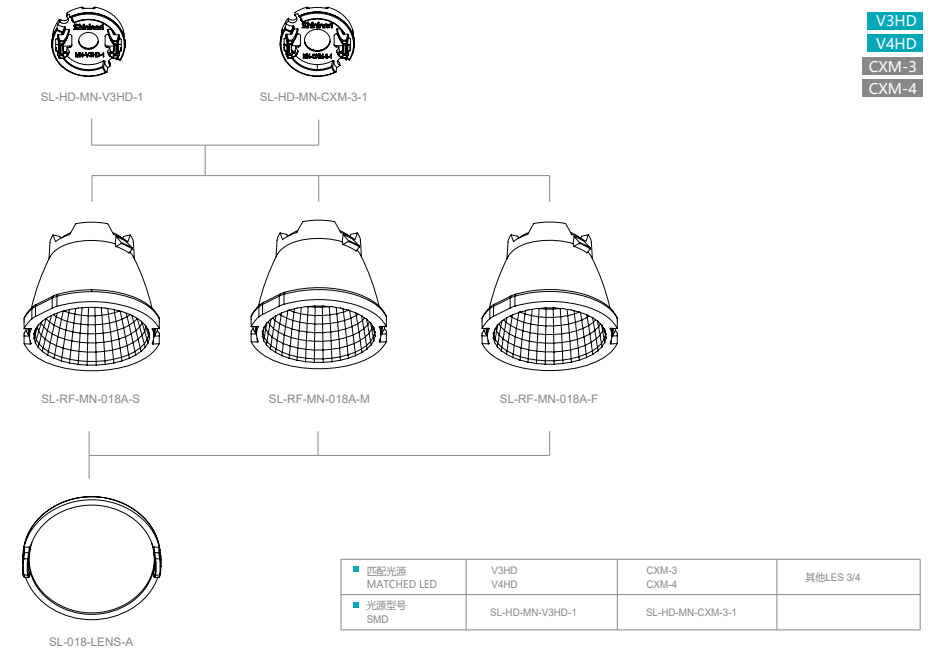
Vacuum Aluminum Plating PC
真空镀铝

Φ:18.0mm H:14.0mm Φ:4.5mm



NEW

Code 型号	Typ.FWHM 标准角度	Typ.eff 标准效率
SL-RF-MN-018A-S	18°	80%
SL-RF-MN-018A-M	25°	88%
SL-RF-MN-018A-F	36°	88%



SHINLAND EVENTS

西朗德发展事记

- 1996** 公司前身潮州市振雄塑胶制品厂，开启注塑加工生产业务；
Chaozhou Zhenxiong Plastic Products Factory has started injection molding processing and production business.
- 2006** 开创手电筒反光杯业务，产品销量一路攀升，并多年蝉联国内销售第一；
created the flashlight reflector business, and the product sales have been rising all the way, and it has been ranked first in domestic sales for many years;
- 2013** 深圳成立总部打开了光学照明领域发展的全新篇章；
the establishment of the headquarters in Shenzhen opened a new chapter in the development of the Optical.
- 2015** 西朗德光学成立车灯事业部，同年在台湾成立研发分公司；
Shinland Optics established the Automotive Lighting Division, and established a R&D branch in Taiwan in the same year.
- 2016** 取得ISO9001质量管理体系认证；
obtained ISO9001 quality management system certification.
- 2017** 西朗德光学成立特种照明事业部
Shinland Optics established the Special Lighting Division.
- 2019** 东莞塘厦购置工业园，成立广东西朗德光学科技有限公司；
purchased an industrial park in Tangxia, Dongguan, and established Guangdong Shinland Optical Technology Co., Ltd.
- 2020** 广东西朗德光学科技有限公司获得国家高新企业认证；
Guangdong Shinland Optical Technology Co., Ltd. won the national high-tech enterprise certification.
- 2021** 深圳市西朗德光学有限公司获得国家高新企业认证
Shenzhen Shinland Optical Technology Co., Ltd. won the national high-tech enterprise certification.
- 2022** 取得IATF 16949汽车行业质量管理体系认证
obtain IATF 16949 automotive industry quality management system certification.
- 2023** 广东西朗德和深圳西朗德连续荣获“专精特新”认定
Shinland was awarded the certification of Specialized and Sophisticated SMEs in Guangdong Province.
- 2024** 荣获多家全球头部企业定点项目
Won multiple designated projects from top global enterprises

QUALIFICATION CERTIFICATION

资质认证



ISO9001 证书

IATF 16949 证书

高新技术企业证书

专精特新证书

深圳市西朗德光学有限公司

地址：深圳市南山区西丽国际创新谷三期7栋C座403

网址：www.shinland.com.cn

邮箱：shinland@shinland.com

电话：0755-86655401

Shenzhen Shinland Optics Co. Ltd.

Block C, 403, Building 7, Phase III, Xili International
Innovation Valley, Nanshan District, Shenzhen, China.

Web : www.xld.shinland.com.cn

Email: shinland@shinland.com

Tel: 0755-86655401

西朗德部分合作伙伴

Some Partners To Shinland



CITIZEN

OSRAM
Opto Semiconductors



LUMENS
Leading the LED Revolution



TRIDONIC

LUMILEDS



XICATO

